



KONICA MINOLTA

AccurioLabel 400

SEE THE POTENTIAL OF OUR NEXT GENERATION LABEL PRESS

RETHINK LABEL PRINTING



5-Colour narrow web
digital label press

Giving Shape to Ideas

TECHNICAL SPECIFICATIONS

RETHINK LABEL PRINTING

SYSTEM SPECIFICATIONS

Technology	Dry Toner Electrophotography
Colour	CMYK, white (optional)
Resolution	Main scan: 1,200 dpi (3,600 dpi equivalent) Sub scan: 2,400 dpi (8 bit)
Tone scale	256 steps (8 bit), 16,700,000 colours
Printing speed	39.9 m/min. (CMYK), down to 20 m/min. (CMYK+W), 39.9, 34.2, 30, 20, 15 m/min. depending on media types
Web control	Integrated web guide system (BST) on infeed section and rewinder
Shaft diameter	3 inches
Paper widths	165 to 330 mm
Max. printed image width (length)	320 mm
Media thickness (weight)	60 to 250 µm
Supported substrates	Paper, PP, PET
Machine dimensions (L x W x H)	7,160 x 1,435 x 1,628 mm 7,360 x 1,538 x 1,905 mm (Pro version)
Machine Floor Layout (L x W x H)	7,930 x 2,130 x 1,628 mm 8,130 x 2,145 x 1,905 mm (Pro version)
Machine weight	2,920 kg 3,520 kg (Pro version)
Max. roll diameter	1,000 mm (unwinder and rewinder)
Options	- Corona treater - Unwind unit for lamination - Drawer dusty cleaner -double sides

CONTROLLER

Konica Minolta Controller	IC-611
Kodak (Creo) Controller, optional	IC-320L

- The support and availability of the listed specifications and functionalities varies depending on operating systems, applications and network protocols as well as network and system configurations.
- The actual life of each consumable will vary depending on use and other printing variables including coverage, size, media type, ambient temperature and humidity.
- Specifications are subject to change without prior notice, please refer to technical documentation for site inspection.
- Konica Minolta does not warrant that any specifications mentioned will be error-free.
- All brand and product names may be registered trademarks or trademarks of their respective holders and are hereby acknowledged.



For Plastic Waste
Management Details



For Battery Waste
Management Details

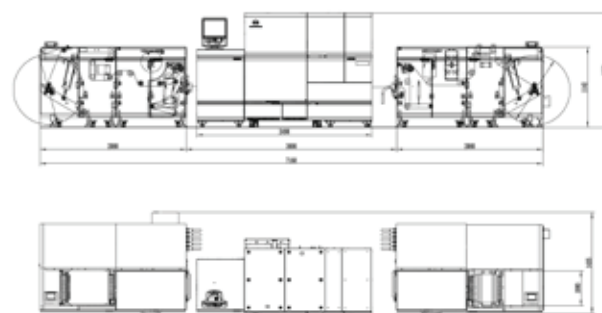


Please scan for more information on
AccurioLabel 400

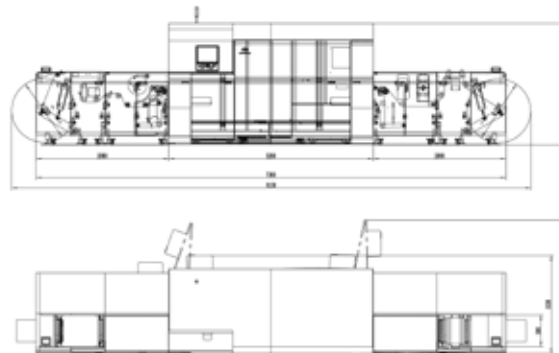
POWER & AIR SUPPLY

Print engine	2 x Single Phase 220-230 V, 25A, 50/60Hz
RE-101	1 x Single Phase 15A, 50/60Hz
IQ-520	1x 200-240 V, 3 A, Single Phase 50-60 Hz
Winders	1 x 3 Phase 380V, 26A, 50/60Hz 1 x 3 Phase 380V, 39A, 50/60Hz (Pro version)
Compressed air	8 bar
Environment requirement	Temperature: 18-23 °C Humidity: 40% to 60% RH

AccurioLabel 400 + ALP 400 Layout



AccurioLabel 400 + ALP 400 Pro Layout



For the Earth. For the Future.

V0123

Konica Minolta Business Solutions India Pvt. Ltd.

Building No: 8, Tower-C, 10th Floor, DLF Cyber City, Phase-2, Gurugram, Haryana-122002, India

Toll Free No. 1800 2662525 | URL: www.konicaminolta.com | marcom@bin.konicaminolta.in

Connect with us:

