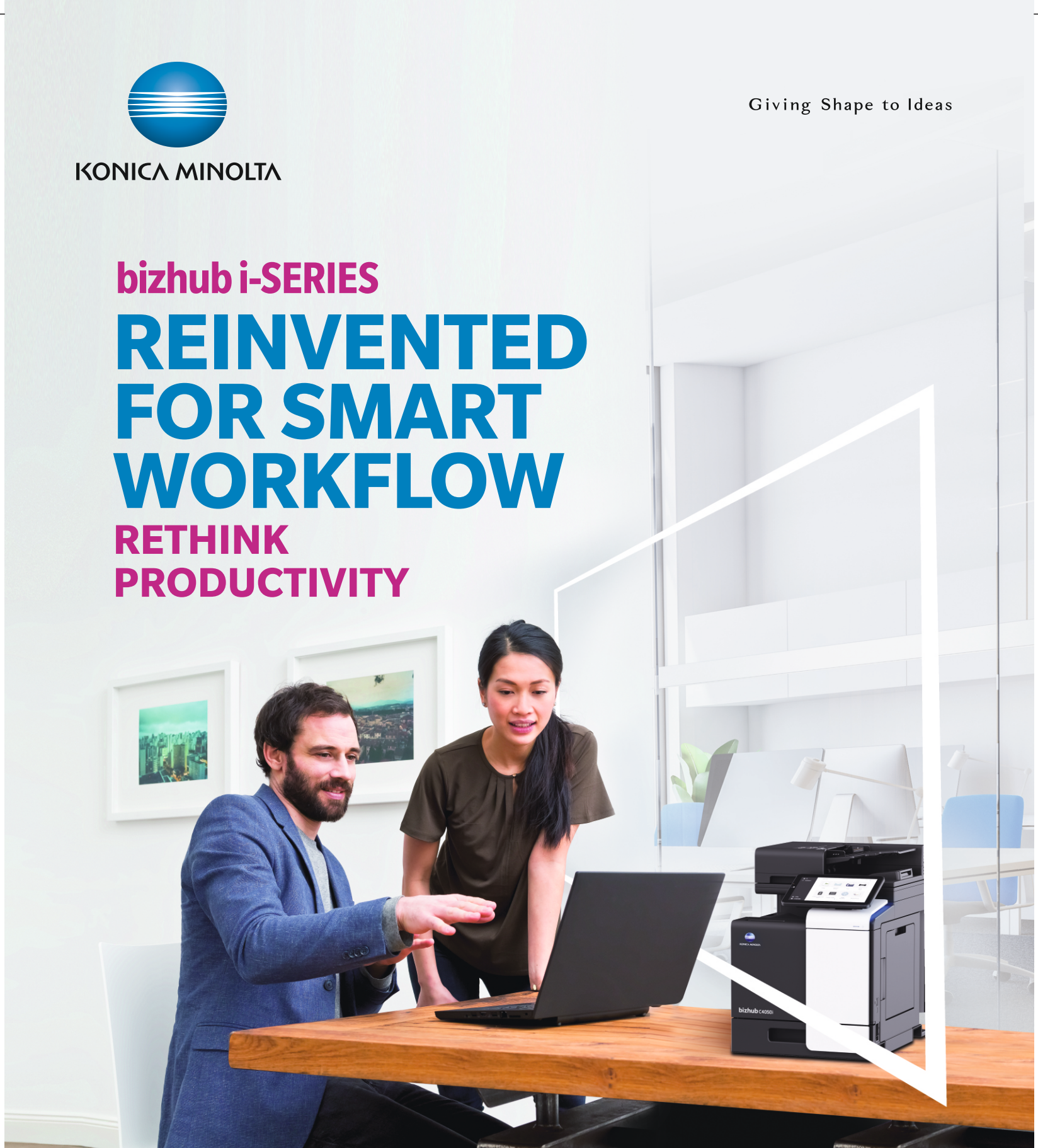




KONICA MINOLTA

Giving Shape to Ideas

bizhub i-SERIES
REINVENTED
FOR SMART
WORKFLOW
RETHINK
PRODUCTIVITY



bizhub

C4050i Colour 40 PPM | BW 40 PPM

C3350i Colour 33 PPM | BW 33 PPM

A4 Colour Multifunctional Printers

i-SERIES SIMPLE

SIMPLIFYING WORK

The User Interface has been completely revamped with an operation panel screen with smart-device-style operability. Operation has been simplified by narrowing down functions and screen transitions to frequently-used functions.

Easy-to-use, new operation panel design

The operation panel features a new simple GUI (Graphical User Interface) design. Features including no hard keys and panel vibration feedback, reflect familiar smart devices and enable easy use of a variety of IT services. Simplicity of operation has been achieved by concentrating on frequently-used functions to minimise functions and screen transitions.



Switchable GUI operation panel with a choice of two panel styles

The user can switch between two panel styles as required: the new GUI Basic Style characterised by simple operation, and the conventional Classic Style utilising advanced settings and functions.

User friendly, large 10.1-inch touch panel

The 10.1 inch panel has been newly developed from the customer's perspective. It delivers better legibility and ease of operation for enhanced work efficiency. The multi-touch feature enables smooth, intuitive tablet-like operation.



Panel vibration assists operation

Touching the panel triggers vibration feedback, assisting panel operation by users who are visually impaired.

Adjustable tilt operation panel

The operation panel can be freely tilted to a maximum 90° to suit individual users. Movement is stiffer when tilting backwards, to accommodate touch panel use, while it can be smoothly adjusted with light pressure when tilting forward.



Compact design

bizhub C4050i series has a compact footprint of 420 mm width and 528 mm depth. Compared to its predecessor, width has been reduced by about 25% and depth by about 11%. Its size lends itself to use in settings such as corporate back offices, deskside in small home offices, or as a departmental machine in large offices.



i-SERIES SECURITY

User authentication, the cloud, and a variety of document data security functions lighten the burden on IT managers facing security issues with large-scale digital data and paper documents.

Encrypted SSD

bizhub C4050i series adopts a new 256GB encrypted SSD for heightened security functions. With very few device compatibility problems, and with full-time encryption, this constantly maintains a high level of security with no fuss.

Secure printing

By setting a password for documents on the printer driver screen, the document is stored on the unit's SSD until the same password is put into the unit's operation panel. The document is protected without being output until the password set for that document is matched. This is useful when you wish to output a vital document or give permission for limited users to receive copies.

Various types of user authentication

Optimal authentication systems can be customised to suit office scale and pre-existing systems. bizhub C4050i series also supports Single Sign-On (SSO) which enhances operability without sacrificing security.

Main unit authentication

Authentication can be performed through the bizhub alone. It is also possible to set detailed usage restrictions for functions, including copy, print, scan and fax.

Non-contact IC card authentication

Non-contact IC cards¹ such as FeliCa can be used to authenticate users². This also supports SSFC (Shared Security Formats Cooperation) specifications which enable integration of staff authentication with authentication systems. Apart from non-contact IC cards, authentication can also be carried out on NFC-compatible Android devices³.

- *1 Non-contact IC cards are compatible with FeliCa (IDm), SSFC, FCF, FCF (Campus) and MIFARE (UID).
- *2 Requires the IC card authentication device AU-2015 option.
- *3 Requires an Android device later than Android 4.4, compatible with HCE (Post Card Emulation), and Konica Minolta Mobile Print.



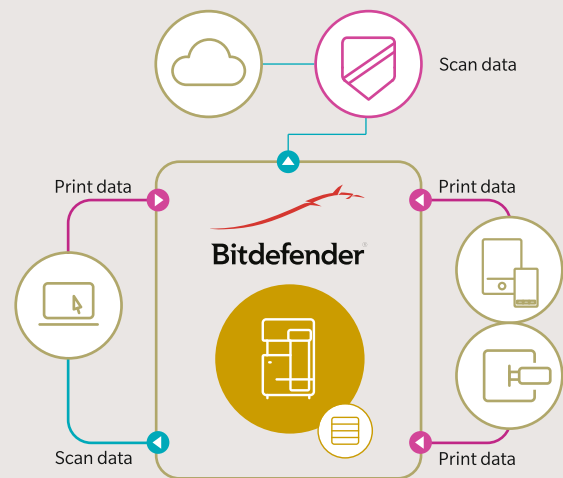
Biometric authentication

Highly accurate authentication is possible using finger veins. It's easy, and also enables the building of high-level security systems.

*Requires the Biometric Authentication Devices AU-102, EK-P08 or EK-P09 and WT-P03 options.

Virus scanning

bizhub C4050i series is equipped with robust antivirus software based on an embedded BitDefender scan engine to ensure safe connection to the MFP by the cloud, and to devices including PCs, tablets, and USB flash drives. Scanning individual files means much finer virus detection than with the whitelist method alone. Latent viruses in the office are discovered through checking and notifying when files are input. Checking when files are output from the MFP also prevents dissemination of infected files. Further periodic checking of files in the MFP discovers risky files and detects latent risks in the MFP. Real time virus scan jobs are available for print, scan and fax functions, while manual or scheduled virus scans are possible for Box and SSD such as SMB folders. *Requires i-Option LK-116.



i-SERIES SUSTAINABILITY

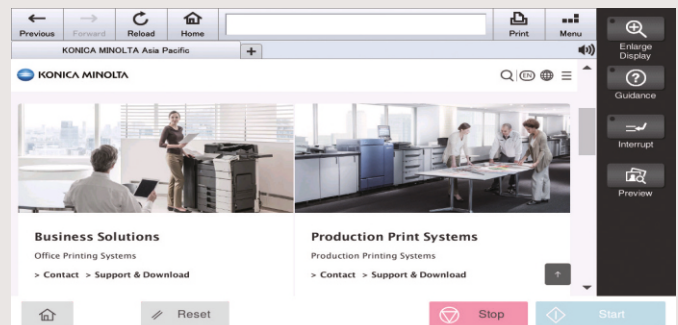
Konica Minolta remotely manages bizhub operating conditions and toner levels, and delivers a variety of support and cloud services including automatic firmware updates and remote monitoring.

Animated guide

The animated guide demonstrates procedures such as handling paper jams and replenishing consumables. Following the instructions displayed on the operation panel ensures smooth operation.

Web browser function

bizhub C4050i series supports a web browser function. Websites can be displayed on the operation panel and printed out. Pages in PDF files on the website can be specified and only the required sections printed. This is very handy, allowing easy printing such as of destination maps from the site.



High-performance quad-core CPU

A high performance Cortex A72 CPU Quad Core 1.6 GHz CPU improves overall system performance. The extra CPU cores mean efficient parallel processing of applications, and seamless operation of cloud applications even during basic MFP's processing functions such as copying and printing.

Shorter warm-up time

The warm-up time, from powering up to printing is kept within 13 seconds. First Copy Out Time, from when the copy button is pressed until the first copy prints, is 4.8 seconds or less. Panel reset time has also shortened greatly to about 1.5 seconds.

COPY / PRINT

Equipped with advanced functions for colour MFPs, both Copy and Print functions exhibit outstanding performance.

High-volume paper input capacity

A 500-sheet large capacity paper feed unit and a 100-sheet multi-manual feed unit come as standard. Adding two optional 500-sheet paper feed units enables a maximum of 1,600 sheets*.

Further installing the optional off-line stapler removes the effort of manual stapling. *80 gsm paper

Fast print speed up to 40 ppm | 33ppm

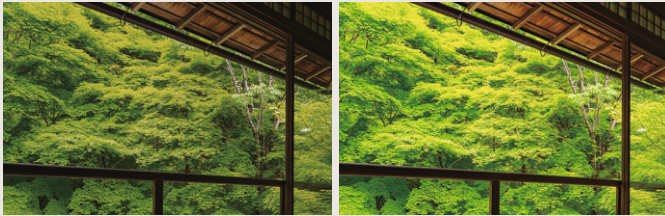
Colour and monochrome printing up to 40 ppm | 33ppm (A4 portrait) enhance business efficiency and productivity. Cabinets and castors can be further customised to suit the office environment and usage settings. Configurations can be freely customised, from A4 submachines in large offices to small home office and shop machines.

Enhanced 1,200 dpi resolution

bizhub C4050i series achieves a 1,200 dpi print resolution with superb ability to reproduce small font sizes and fine lines. Such faithful reproduction capability improves document legibility and produces beautiful, high quality printouts. *Slows down printing speed.

Adoption of colour matching, corresponding to "memory colour"

Printer driver colour settings have been revised to perform colour matching corresponding to default "Memory Colour Settings". "Memory Colour Settings" refer to colours that most people recall as being brighter and more saturated than reality. Konica Minolta's colour matching improves satisfaction with print quality by strongly appealing to people's colour memories.



Conventional method

C4050i

Standard USB port

A USB port is standard equipment, located on the side of the main unit's operation panel. After inserting a USB flash drive, printing procedures pop up in the touch screen, and the flash drive data can be directly printed or saved to a box in the unit with a few easy steps.

- * May not operate correctly depending on the type of USB flash drive.
- * Supported file formats: PDF, compact PDF, JPEG, TIFF, XPS, compact XPS, and OOXML (.docx/.xlsx/.pptx).
- * Printing results may differ from the image on the PC screen.

SCAN

The Scan function delivers high performance and high functionality from speed, quality and distribution to storage.

Outstanding scan performance

Automatic duplex, simultaneous scanning with an Automatic Document Feeder (ADF), achieves high-speed colour scanning of 90 ppm (45 double-sided A4 sheets per minute). Up to 80 sheets* can be set at any one time, significantly reducing scanning time and effort. The precision of automatic skew correction, which adjusts the angle of the scanned original, has been greatly improved to deliver highly accurate scanning with less skew. *80gsm

Double feed detection sensor

Applying ultrasonic waves to the original distinguishes a layer of air between each page and detects double feeds. When a double feed is detected, a preview of the original that has already been scanned will be displayed so that the job can be restarted without repeating the whole scanning operation from the beginning.

*Requires Upgrade Kit UK-P19 option.

Paper Size Measurement function

This function automatically measures irregular-sized paper placed on the platen glass. The size of the measured paper can also be registered in the bizhub's memory. It can be utilised in offices that handle irregular paper sizes like slips and vouchers.



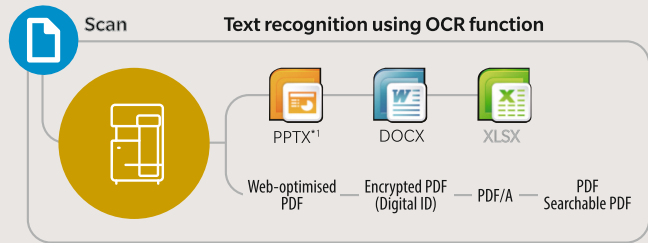
Scan to URL function

Equipped with a Scan to URL function which stores Scan data within the bizhub, then emails the storage destination URL to the user. This enables easy transmission of large volume data that cannot be attached to emails.

Digitisation of paper documents

Documents can be scanned and converted to PDF or OOXML format files. File format can be selected according to the business and intended use, which broadens the scope of secondary use.

Scan to PDF / Scan to OOXML image (with LK-110 v2 installed)



*Applying OCR to a document produces searchable text.

*Microsoft Office etc. enables reuse of images and text.

File conversion formats and required options (i-Option)

	LK-102 v3	LK-105 v4	LK-110 v2
PDF/A (long-term archiving)	✓		✓
Web-optimised PDF (linearised PDF)	✓		✓
Encrypted PDF (digital ID)	✓		✓
Searchable PDF (OCR)		✓	✓
OOXML file (extension: docx/.xlsx/.pptx) conversion			✓ ^{*1}
OOXML file (extension: docx/.xlsx/.pptx) conversion +OCR		✓ ^{*2}	✓

*1 pptx conversion is a standard function, but the OCR function requires either LK-105 v4 or LK-110 v2.

*2 Only compatible with pptx.

MOBILE

Offers a new work style through advanced connectivity with mobile devices.

Mobile communications function

Connectivity with NFC-equipped Android devices

The operation panel has a mobile touch area compatible with NFC-equipped devices. Installing Konica Minolta Mobile Print on Android devices allows that device to be registered to bizhub. Just holding the Android device over the mobile touch area enables the selected file to be printed. Originals set in bizhub can also be scanned and saved to Android devices or cloud storage. Where user authentication is enabled, just holding the Android device nearby allows log in.

*Requires the Android device to be equipped with OS4.4 or later.

*Requires a wireless LAN environment.

Bluetooth LE connectivity with iOS devices

Using Bluetooth LE (low energy), a bizhub close to the user can be searched and registered with Konica Minolta Mobile Print. As it is also supported with the iOS action button, printing and scan data sharing from various applications can be smoothly executed. Further, where user authentication is enabled, Bluetooth LE can be used to log in.

*Requires the device connection I/F kit EK-P09 option. *Requires wireless LAN environment.

Wireless LAN (AP Mode)

bizhub C4050i series supports Simple AP Mode*, which easily creates a local wireless LAN environment with only the bizhub allowing a wireless LAN to be built separately from the company LAN. Because it bypasses the company LAN, even mobile devices brought in from outside can be securely connected.

*Requires Upgrade Kit UK-221 option.

ECO FRIENDLY

A range of environmental considerations made, from 'outer case materials' to 'power consumption'.

Adoption of recycled materials

Konica Minolta has further refined our original chemical processing technology, which now uses recycled PC/PET for exterior and interior materials. As a result, use of recycled materials has increased to about 60%, as a surface area ratio. Proactive adoption of recycled materials contributes to effective use of resources and promotes corporate environmental protection.

*PCR (Post Consumer Recycling) ratio: is the proportion of materials collected in the municipality used in recycled materials.

0.5W sleep mode power consumption

Power saving logic has been improved, including turning off the CPU during sleep mode, to reduce sleep mode power consumption to 0.5W. In addition to helping reduce environmental impact, this is also effective in reducing TCO (Total Cost of Ownership).

Wide-ranging environmental compatibility. Compliant with various environmental standards

To address environmental issues such as global warming, our products are compatible with global environmental standards, including the International Energy Star Program which aims to develop and introduce highly energy-efficient office equipment.



The Blue Angel (Germany)



Green Purchase (Japan)



Eco Mark (Japan)



RoHS 対応 (Restriction of Hazardous Substances/EU)



Eco Leaf (Japan)

TECHNICAL SPECIFICATIONS

SYSTEM SPECIFICATIONS

Print size/resolution	10.1" / 1024 x 600
System memory (standard/max)	5,120 MB
System hard drive	256 GB SSD (standard)
Interface	10/100/1,000-Base-T Ethernet; USB 2.0; Wi-Fi 802.11 b/g/n (optional)
Network protocols	TCP/IP (IPv4/IPv6); SMB; LPD; IPP; SNMP; HTTP(S); AppleTalk; Bonjour
Automatic document feeder (standard)	Up to 80 originals; A5-A4; 50-128 g/m ² ; Dualscan ADF
Paper input capacity (standard/max)	600 sheets / 1,600 sheets
Paper tray input (standard)	1x 500 sheets; A6-A4; custom sizes; 60-210 g/m ²
Paper tray input (optional)	1x 500 sheets; A4; 60-90 g/m ² 1x 500 sheets; A4; 60-90 g/m ²
Manual bypass	100 sheets; A6-A4; Custom sizes; 60-210 g/m ²
Automatic duplexing	B5-A4; 60-210 g/m ²
Finishing modes (optional)	Group; Sort; Staple (offline)
Output capacity (standard)	Max. 250 sheets
Power consumption	220-240 V / 50/60 Hz; Less than 1.45 kW
System dimension (W x D x H)	420 x 528 x 572 mm (without options)
System weight	Approx. 39.0 kg (without options)

PRINTER SPECIFICATIONS

Print resolution	1,800 (equivalent) x 600 dpi; 1200 x 1200 dpi
Page description language	PCL 6 (XL3.0); PCL 5c; PostScript 3 (CPSI 3016); XPS
Operating System	Windows 7 (32/64); Windows 8/8.1 (32/64); Windows 10 (32/64); Windows Server 2008 (32/64); Windows Server 2008 R2; Windows Server 2012; Windows Server 2012 R2; Windows Server 2016; Windows Server 2019; Macintosh OS X 10.10 or later; Unix; Linux; Citrix
Printer fonts	80 PCL Latin; 137 PostScript 3 Emulation Latin
Mobile printing	AirPrint (iOS); Mopria (Android); Konica Minolta Mobile Print (iOS/Android/Windows 10 Mobile); Mobile Authentication and Pairing (iOS/Android) Optional: Google Cloud Print; WiFi Direct

SCANNER SPECIFICATIONS

Scan speed (mono/colour)	Up to 45/45 ipm in simplex Up to 90/90 ipm in duplex
Scan modes	Scan-to-eMail (Scan-to-Me); Scan-to-SMB (Scan-to-Home); Scan-to-FTP; Scan-to-Box; Scan-to-USB; Scan-to-WebDAV; Scan-to-URL; TWAIN scan
File formats	JPEG; TIFF; PDF; Compact PDF; Encrypted PDF; XPS; Compact XPS; PPTX Optional: Searchable PDF; PDF/A 1a and 1b; Searchable DOCX/PPTX/XLSX
Scan destinations	2,100 (single + group); LDAP support

COPIER SPECIFICATIONS

Imaging technology	Laser
Toner technology	Simitri® HD polymerised toner
Copy/print speed A4 (mono/colour)	Up to 40/40 ppm, upto 33 33ppm
Auto duplex Speed A4 (mono/colour)	Up to 40/40 ppm, upto 33 33ppm
1 st copy out time A4 (mono/colour)	4.8/5.4 sec., 5.6 6.3 sec.
Warm-up time	Approx. 13 sec. in mono; 15 sec. in color ²
Copy resolution	600 x 600 dpi
Gradation	256 gradations
Multicopy	1-9,999
Original format	A6-A4; Custom sizes
Magnification	25-400% in 0.1% steps; Auto-zooming

FAX SPECIFICATIONS

Fax*	Super G3 (optional)
Fax transmission	Analogue; i-Fax; Colour i-Fax; IP-Fax
Fax resolution	Up to 600 x 600 dpi
Fax compression	MH; MR; MMR; JBIG
Fax modem	Up to 33.6 Kbps
Fax destinations	2,100 (single + group)

USER BOX SPECIFICATIONS

Storable documents	Up to 3,000 documents or 10,000 pages
Type of user boxes	Public; Personal (with password or authentication); Group (with authentication)
Type of system boxes	Secure print; Encrypted PDF print; Fax receipt; Fax polling

SYSTEM FEATURES

Security Functions (standard)	ISO 15408 HCD-PP Common Criteria (in evaluation); IP filtering and port blocking; SSL2; SSL3 and TLS1.0/1.1/1.2 network communication; IPsec support; IEEE 802.1x support; User authentication; Authentication log; Secure print; Kerberos; Hard drive overwrite; Hard drive data encryption (AES 256); Confidential fax receipt; Print user data encryption
Security Functions (optional)	Antivirus realtime scanning (Bitdefender®)
Accounting (standard)	Up to 1,000 user accounts; Active Directory support (user name + password + e-mail + smb folder); User function access definition
Accounting Functions (optional)	Biometric authentication (finger vein scanner); ID card authentication (ID card reader); Authentication by mobile device (Android/iOS)
Software	Net Care Device Manager; Data Administrator; Box Operator; Web Connection; Print Status Notifier; Driver Packaging Utility; Log Management Utility

² Warm-up time may vary depending on the operating environment and usage

*FK-517 required

- All specifications refer to A4-size paper of 80 g/m² quality.
- The support and availability of the listed specifications and functionalities varies depending on operating systems, applications and network protocols as well as network and system configurations.
- Some of the product illustrations contain optional accessories.
- Specifications and accessories are based on the information available at the time of printing and are subject to change without notice.
- Konica Minolta does not warrant that any specifications mentioned will be error-free.
- All brand and product names may be registered trademarks or trademarks of their respective holders and are hereby acknowledged.

bizhub C4050i / C3350i

Product appearance, configuration and/or specifications are subject to change without notice. This product is not available for some countries or regions.

KONICA MINOLTA, symbol mark, Giving Shape to Ideas, AccurioLabel, AccurioPro, Simitri, S.E.A.D. and KONICA MINOLATA OPTIMIZED PRINT SERVICES

are registered trademarks or trademarks of KONICA MINOLTA, INC.

Windows and Windows Server are registered trademarks or trademarks of Microsoft Corporation in the U.S. and other countries.

Adobe and PostScript are registered trademarks or trademarks of Adobe Systems Inc.

Mac OS is registered trademark or trademark of Apple Inc.

All other brands and product names are registered trademarks or trademarks of their respective companies or organisations.



From consulting, system design, to operations, Konica Minolta offers total support to optimise your office output environment.

<http://www.bt.konicaminolta.in>

Requirements for safe use

- Please read and follow the instruction manual to ensure safe operation.
- Only operate using appropriate power supply and voltage.
- Connecting the earth wire to an inappropriate place may cause explosion or electric shock. Please connect accordingly (Taiwan and the Philippines only).



Konica Minolta Business Solutions India Pvt. Ltd.

Building No: 8, Tower-C, 10th Floor, DLF Cyber City, Phase-2, Gurugram, Haryana-122002, India | Board No. +91-124-6652000

URL: www.konicaminolta.in | marcom@bin.konicaminolta.in

Connect with us :