



KONICA MINOLTA

AccurioPress
6272P

**TWICE THE SPEED,
DOUBLE THE
PRODUCTIVITY**
**RETHINK MONOCHROME
PRINT PRODUCTION**



Giving Shape to Ideas

YOUR ADVANTAGES WITH THE AccurioPress 6272P

RETHINK MONOCHROME PRINT PRODUCTION

HIGHEST RELIABILITY

- Long-life platform, long-lasting parts and consumables
- Independent front-to-back alignment/distortion adjustment function for accurate duplex registration
- Pass through mode for consistent print production

PERFECT IMAGE QUALITY

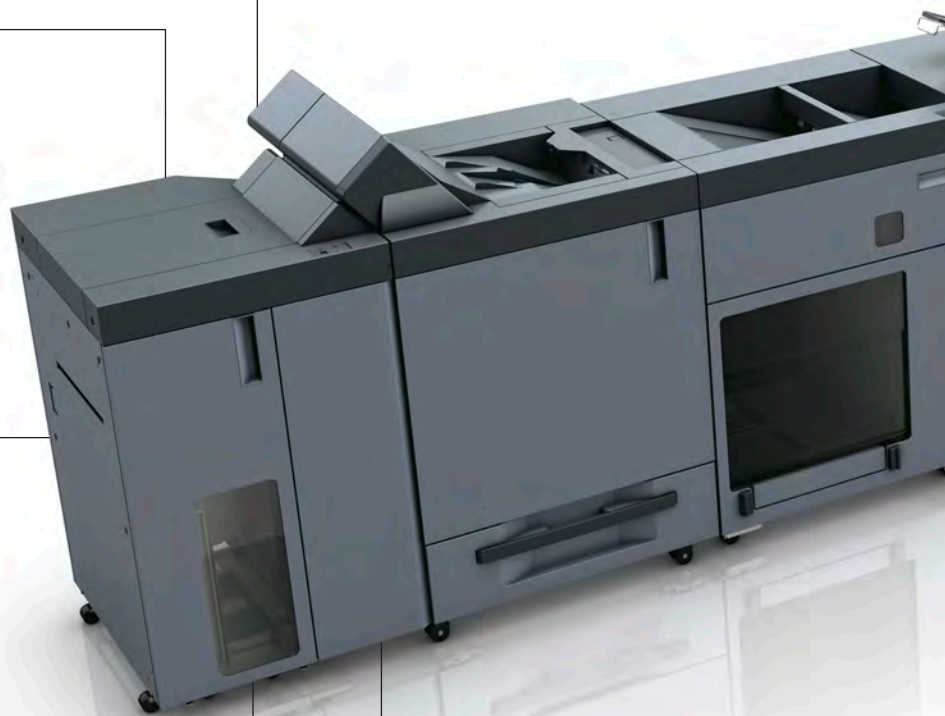
- 1,200 x 1,200 dpi resolution
- Dual-engine technology
- Simitri® HD toner technology
- Image density adjustment technology for both engines

GEARED-UP FINISHING

- 2- & 4-hole punching
- 6 different types of folding
- Large-capacity stacking, up to 18,000 sheets

FINISHED INLINE PRODUCTS

- 50-sheet booklet making with face trimming and optional creasing, slitting and square folding
- Perfect binding for books up to 30 mm
- 100-sheet stapling



COMPREHENSIVE MEDIA PROCESSING

- Up to 350 g/m² paper weight in simplex and duplex printing
- Skew detection system to prevent paper skew
- Professional feeding of coated media
- Mechanical decurling as standard
- Optional inter-cooler curl eliminator

HIGH-END PRINT CONTROL

- Proprietary Konica Minolta Controller
- Integration into hybrid workflows

EASE OF USE

- Automated real-time engine calibration
- Simple paper catalogue settings and easy instructions

DURABLE PERFORMANCE

- Duty cycle of 6.4 million images per month
- Up to 272 A4 images per minute
- Up to 156 A3 images per minute

SOPHISTICATED MEDIA HANDLING

- Air-suction or air-assist feeding technology
- Up to 18,000 sheets paper input capacity or 14,000-sheet paper input and 5,000-sheet post insertion
- Up to 11 paper input trays





KONICA MINOLTA

TECHNICAL SPECIFICATIONS

RETHINK INNOVATION

KONICA MINOLTA CONTROLLER

Type	Built-in type
Resolution	Print: 1,200 x 1,200 dpi; 600 dpi x 600 dpi
CPU	Intel Core i5 4570S 2.9 GHz
Clock speed	3.2 GHz
RAM	16 GB
HDD	1 TB x2
SSD	4 GB
Interface	Ethernet 10/100/1000BASE-T USB 3.0 (for direct print service) USB 2.0 (for local print)
Page-description language	PCLSE/XL (PCL6); Adobe PostScript 3 (PS3020); PDF directprint (PDF Ver.1.7) TIFF (TIFF Ver.6) direct print; PPML (Ver 2.2), APPE (Ver. 4.6, UK-217 required)

OPTIONS

Air assist paper feed unit	PF-709
Pre-printed paper feed kit for PF-706	PP-701
Air-assist paper feed unit	PF-710
Heating unit for PF-710	HT-506
Post insertion unit	PI-PFU
Relay unit	RU-518m
Humidification unit	HM-103
Intelligent Quality Optimiser	IQ-501
Relay unit	RU-510
Folding and punching unit	FD-503
Stacking unit	LS-507
Booklet making unit	SD-506
Booklet making unit	SD-513
Creasing unit for SD-513	CR-101
Slitting unit for SD-513	TU-503
Spine corner forming unit for SD-513	FD-504
Perfect binding unit	PB-503
Stapling unit	FS-532m
Saddle stitch kit for FS-532m	SD-510
Punch kit for FS-532m	PK-525
Post inserter for FS-532m	PI-502
Open stacker	OT-512

SYSTEM SPECIFICATIONS

Resolution	1,200 x 1,200 dpi
Paper weight	40-300 g/m ²
Paper sizes	Min.: 95 x 139 mm Max.: 324 x 483 mm
Paper input capacity	Max.: 18,000 sheets
Main unit dimensions (W x D x H)	2,815 x 910 x 1,020 mm*
Main unit weight	776 kg*

PRODUCTIVITY

Duplex	
A4 - max. per minute	272 ipm
A3 - max. per minute	156 ipm
SRA3 - max. per minute	152 ipm
A4 - max. per hour	15,504 ipm
A3 - max. per hour	8,892 ipm
SRA3 - max. per hour	8,436 ipm

PRODUCTIVITY

Simplex	
A4 - max. per minute	136 ppm
A3 - max. per minute	78 ppm
SRA3 - max. per minute	74 ppm
A4 - max. per hour	7,034 ppm
A3 - max. per hour	4,072 pph
SRA3 - max. per hour	3,846 pph

* Mainbody 1+ 2 + RU-510 + TD-502

- All specifications refer to A4-size paper of 80 g/m² quality.
- The support and availability of the listed specifications and functionalities vary depending on operating systems, applications and network protocols as well as network and system configurations.
- The stated life expectancy of each consumable is based on specific operating conditions such as page coverage for a particular page size (5 % coverage of A4).
- The actual life of each consumable will vary depending on use and other printing variables including page coverage, page size, media type, continuous or intermittent printing, ambient temperature and humidity.
- Some of the product illustrations contain optional accessories.
- Specifications and accessories are based on the information available at the time of printing and are subject to change without notice.
- Konica Minolta does not warrant that any prices or specifications mentioned will be error-free.
- All brand and product names may be registered trademarks or trademarks of their respective holders and are hereby acknowledged.



Konica Minolta Business Solutions India Pvt. Ltd.

Building No.: 8, Tower-C, 10th Floor, DLF Cyber City, Phase-2, Gurugram, Haryana-122002, India | Board No.: +91-124-6652000

URL: bt.konicaminolta.in | marcom@bin.konicaminolta.in

Connect with us :

Toll free: For Sales Enquiry: 1800-266-2525