



KONICA MINOLTA

Giving Shape to Ideas

MULTIFOLD FUNCTIONALITY WITH VIBRANT COLOUR



- | | | |
|--|--|--|
| bhC368
Colour B&W
36/36
ppm | bhC308
Colour B&W
30/30
ppm | bhC258
Colour B&W
25/25
ppm |
| SRA3 | PRINT | COPY |
| Dual Scan ADF
160 opm
Duplex | Dual Scan ADF
80 opm
Simplex | SCAN TO USB |
| USB Print | Colour Internet Fax | Fax |
| MOBILE SUPPORT | 1200 DPI
RESOLUTION | 9 inch
OPERATION PANEL |
| AirPrint | Google Cloud Print Ready | PRINT WITH ANDROID |
| mopria | KMPS | INFO-Palette |
| Biometric Authentication | IC-Card Authentication | Emperon Driven! |
| Bioplastic | Recycled PC/PET | PageScope Mobile |

Simitri
with Biomass

bizhub C368/C308/C258



The simplicity and usability to fit in any working environment

The product design

The bizhub C368 series adopts easy and intuitive INFO-Palette design with smart user interface. You get the same user experience through seamless operation across the PCs, tablets or smartphones.



The 9 inch operation panel

The 9 inch operation panel provides user friendly interface. There are 4 hard menu keys at the bottom of the panel, combining it with on-screen soft menu keys allows user to register for functions such as copy, scan/fax, preview or soft numeric keypad.

The screen display function can be enlarged and screen display colour can be reversed for ease of use.



Hard registration keys
Register up to 4 commonly used function.

Soft menu keys
Register up to 5 commonly used function.

Soft menu keys will appear by tapping on the screen tab.

Widgets function

The new bizhub C368 series comes with embedded widget application where users can install and execute within the MFP operation panel. Text boxes, icons or GIF animations can be configured and used for internal communication, messages and rules.



Print from anywhere, anytime with the most advanced wireless, mobile and cloud technology

To connect with Android devices

The operation panel is equipped with newly embedded Mobile Touch Area to support NFC (Near Field Communication) connection for Android¹ devices. Pairing can be performed, through PageScope Mobile (PSM), by touching the area with Android device. First select the files on PSM and then touch the device to the operation panel to perform print² or scan².

¹ NFC connection requires Android OS 4.4 or higher to be installed.

² Wireless LAN environment is required to perform touch to print and scan.



To connect with iOS devices

For the iOS devices, you can search and register nearby bizhub into the PageScope Mobile (PSM)³ via Bluetooth LE (BLE)⁴ technology. iOS devices can also be used to log-into bizhub via BLE connection. Selected files on PSM can be printed⁵ directly or scan⁵ files to iOS devices.

³ PageScope Mobile for iPhone / iPad version 5.0 or higher is required.

⁴ Optional Device Connection I/F Kit EK-609 is required.

⁵ Wireless LAN requirement is required to perform print & scan.

Wireless LAN (AP mode) support

Make your bizhub wireless LAN Access Point⁶ to wirelessly connect mobile devices. Devices thus will not only able to connect directly with bizhub but are also securely separated from existing LANs.

PageScope Mobile³ will enable more convenience as wireless set up can be completed between a mobile device and bizhub by reading the QR code that is displayed on the machine panel.

⁶ Optional Upgrade Kit UK -212 is required.

QR code display screen



Wireless LAN (AP mode) connection image



⁶ In AP mode (base unit), simultaneous connections can be made with up to 5 devices.

To connect instantly without print drivers to the industry standard mobile technologies

AirPrint

Apple's standard printing system is compatible with iOS 4.2 and Mac OS 10.7 or later. A compatible printer on your wireless LAN can be used.



Mopria Print Service

Wireless printing technology established by Mopria Alliance. It allows you to print from devices installed with Android 4.4 or later.



Google Cloud Print

A cloud print service provided by Google. You can print from any location via the internet regardless of OS or device type.



^{*} Google Cloud Print Setup and Google account registration are required.
^{*} Optional Upgrade Kit UK-211 is required.

Konica Minolta Print Service

Print directly to bizhub via a wireless LAN from all apps that supports Android's print function.



PageScope Mobile

Konica Minolta's proprietary mobile print application allows usage of wide range of bizhub functions such as duplex print, security print, staple and punch.



Standard web browser

The multi-touch UI in the operational panel can be used to display and print webpage contents. Printing of portions of PDF files or maps directly from the websites are more convenient now.

Flexible and advanced security features to protect valuable information

Authentication on the MFP main unit

User can perform authentication directly on the main unit. Access control can be set up for functions like print, scan, copy and fax¹.

¹ Optional Fax Kit FK-513 is required.

IC card authentication

Users can authenticate² with various types of IC card³. The authentication method complies with SSFC (Shared Security Formats Cooperation). Besides the IC Card, users can authenticate with Android devices⁴ with equipped NFC antenna.



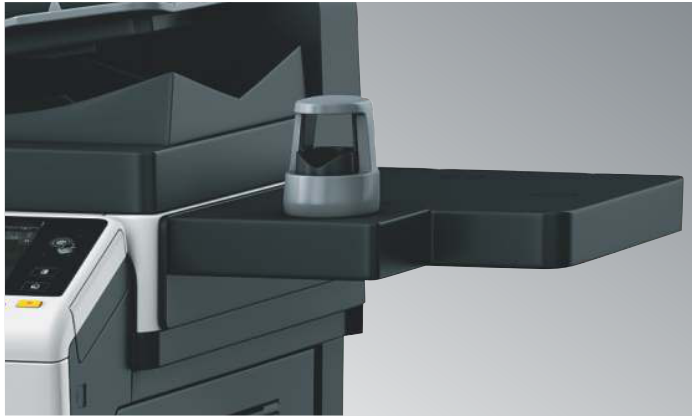
² Compliant non-contact IC cards include FeliCa (Idm), SSFC, FCF, FCF (campus), FeliCa Private, and MIFARE (UID).

³ Requires Android 4.4 or later that supports HCE (Host Card Emulation) or PageScope Mobile for Android v4.1 or later.

Biometric authentication

Scans the veins on the finger as the biometric data which offers very high-level security and is easy to implement⁴.

*4 Optional Biometric Authentication Unit AU-102 and Working Table WT-506 are required.



HDD mirroring

Supports "Mirroring" which synchronizes the main HDD data and backup HDD data in real time. In the event of main HDD failure, operation automatically switches to the backup HDD which will drastically reduce the risk of data loss.

* Optional HDD Mirroring Kit HD -524 is required.

Server-less pull printing

With server-less pull printing, print jobs sent by user can be printed from any MFP in the same network.

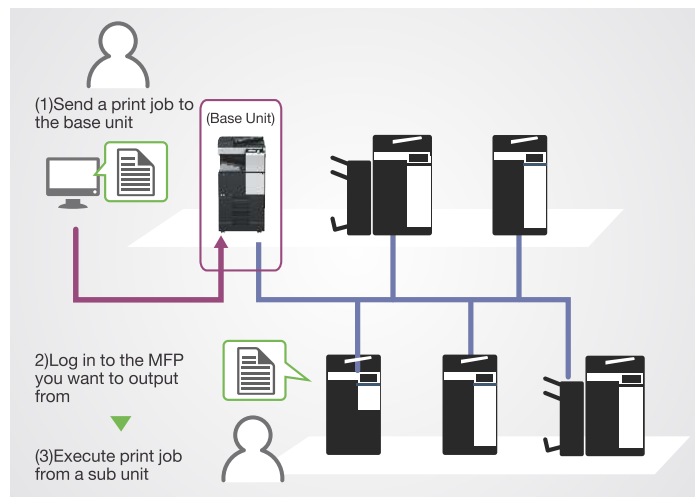
* A pull printing system consisting of a maximum of 10 MFPs can be created. It is necessary that all corresponding MFPs be in the same network.

* Optional i-Option LK-114 and Upgrade Kit UK-211 are required to be installed to each of the MFP.

TPM (Trusted Platform Module)

TPM (Trusted Platform Module) is a security chip which encrypts and decrypts confidential data. The information is encrypted and stored in dedicated storage area in the chip to avoid unauthorized reading.

* Optional i-Option LK-115 v2 is required.



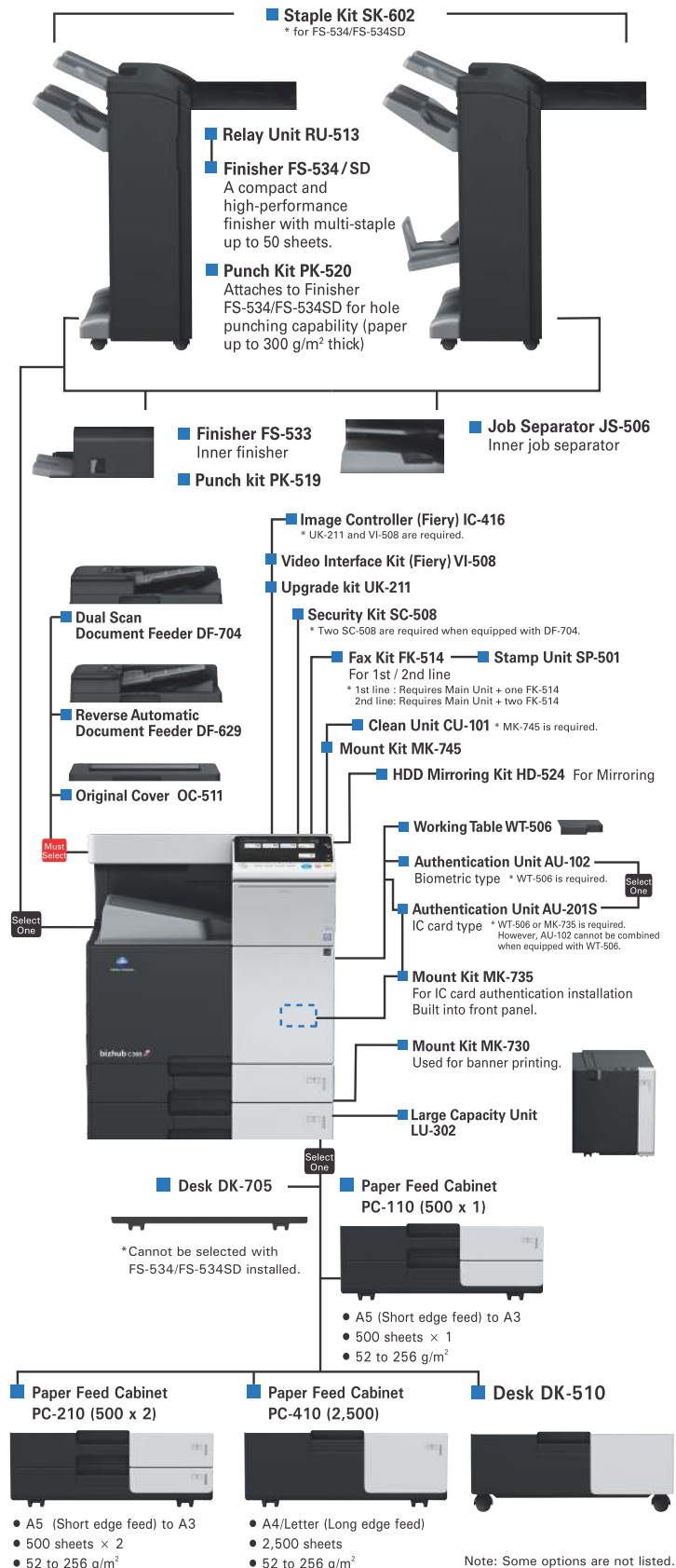
Environmental contribution is always the top priority

Top class power consumption and TEC value in its class

The MFP's CPU power is set to turn off during sleep mode. This results in a best-in-class 0.5 W power consumption ratio (during sleep mode). The TEC value has also been reduced approximately by 5-18%. CO₂ emission from the MFP is drastically reduced.

SYSTEM

- Upgrade kit UK-211
2 GB memory
- Upgrade kit UK-212
Wireless LAN kit
* EK-608 or EK-609 is required.
- Keypad KP-101
- Device Connection I/F Kit EK-608
USB hub kit / Voice guidance
- Device Connection I/F Kit EK-609
Bluetooth LE / Voice guidance
- bizhub Connector S-1/G-1/E-1



Select One One of the options may be selected (not mandatory)

Must Select One of the options must be selected (mandatory)

Note: Some options are not listed.

