



KONICA MINOLTA

# KIP 7170

Ultimate - Multi-Touch Performance



# KIP 7170

## Infinite Possibilities



### Smart Multi-Touch Control

- 307 mm Smart Multi-Touch Display
- Touch Simplicity: Swipe, Rotate, Pinch, Spread & Tap
- Intuitive, Tablet Style Touch Controls
- Uniform Operations for Improved Experience
- Walk-Up Operator Convenience
- High Demand Productivity
- View and Print Area of Interest

## KIP 7170

### MULTI-FUNCTION SPACE SAVING SYSTEM

The productivity of the KIP 7170 system is designed to satisfy the most demanding needs of decentralised users. The versatile KIP 7170 may also be expanded to provide Multi-Function convenience. KIP 7170 system software is ideal for decentralised environments and expandable to meet the need for centralised printing.

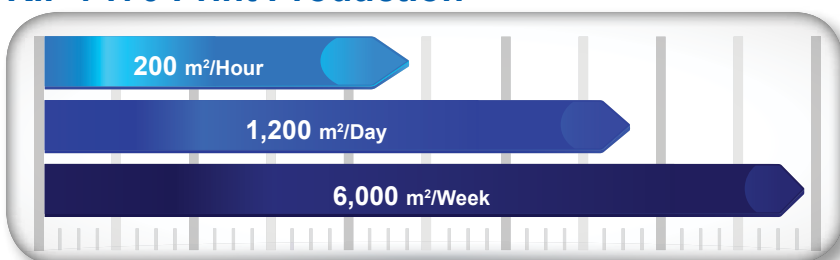


### System Features

- Single footprint configuration
- Colour touch controls
- Integrated top stacking
- 2 integrated media rolls
- 3,3 'A0' size prints per minute
- 600 X 2400 dpi printing
- High definition print technology
- Print from & scan to the cloud
- CIS scanning technology - with Real-Time Thresholding Technology
- Rear delivery for high production
- Smart Eco<sup>2</sup> design



### KIP 7170 Print Production



### Integrated USB Drives

KIP 7170 systems eliminate the need for additional PC hardware by printing documents directly from the touchscreen software. Integrated support for removable media such as standard USB drives provides the ability to securely print documents directly from a range of media formats.



# SYSTEM SOFTWARE



## A new generation of wide format functionality

We invite you to experience the intuitive interface, extensive functionality, advanced navigation and cloud collaboration for your production environment. KIP System K Applications are uniformly integrated with KIP Multi-function Systems for smarter colour and B&W copy, scan and print solutions.

### SYSTEM K

### MULTI-TOUCH SCREEN

#### KIP Multi-Touch Control

All system functions for the KIP 70 Series are performed through an integrated, 307 mm multi-touch style colour display to copy, print and scan both colour and B&W documents.



Vivid 307 mm Colour Multi-Touch Display | Fully Articulating Viewing Angle | Print, Copy and Scan in B&W and Full Colour\* | Super View for Swipe, Pinch, Spread and Rotate | Print Directly from Removable Media, the Cloud and Local Mailboxes | Full Colour User Guides | Integrated Print Previews | View and Print Area of Interest | On-screen Set Copy Editor | Manage History Queue | Optional KIP Color Plus for Copy and Print in Full Colour\*



#### KIP Colour Copy & Print Plus

KIP Colour Copy & Print Plus expands the capabilities of the KIP 70 Series System by connecting to up to three networked colour printers.



Full Size Colour Preview with Super View | Guest Printer Connection via IP Address | Quick Closed Loop Calibration for Accurate Document Reproduction | Simultaneous Operation of Colour and B&W Functions | Real-Time Image Preview | Full Screen Colour Preview | Advanced Colour Image Enhancement | Preview Colour Adjustments

#### KIP Cloud Connect

Sharing online content via popular Cloud Services has become a critical collaboration tool. Scan to and print from the cloud directly at the multi-touch display.



Select from Multiple Cloud Services | Print from KIP Cloud Connect | Scan to KIP Cloud Connect | Unlimited Cloud Connections | Single or Multiple Files | Choose Files from Multiple Cloud Services for Single Print Job | Easy Configuration from Multi-Touch Screen | Collated Sets Printing







## SYSTEM K

### Windows® Driver

The KIP Windows® Driver Pro is Microsoft® WHQL certified, meeting exact standards of reliability and quality.



Fast Spooling for Multiple Copies or Sets | Displays Real-Time System Status | Information Set Collation | Provides Current Media Information | Media Selection | Secure PIN Printing | Send Job on Hold | Save Templates | Brightness Adjustment | Unlimited Image Quality Presets | Pen Preset Selection



### AutoCAD® Driver

The KIP certified AutoCAD® Driver provides integrated printing from within Autodesk® software applications such as AutoCAD®, AutoCAD® LT and DWG TrueView.



Fully Compatible with Current Versions of AutoCAD® | True HDI AutoCAD® Driver | 32 and 64 Bit Operating System Compatibility | Real-Time Media Status | Custom Media Size Configuration | Media Saving by Auto Rotation | Advanced Colour Mode Image Type Selection | Dither Pattern Control for B&W Lines vs Aerial

### KIP Data Security Features

At KIP, security is paramount. As a world leader in the development of digital wide format production technology, KIP is committed to keeping digital information safe and secure.



Image Overwrite | Removable Hard Disk Drive Accessory Kit | System K Operating System Windows® Embedded System 7 | Standard Security Updates | Data Encryption and Virus Scanning Applications | KIP Secure Print



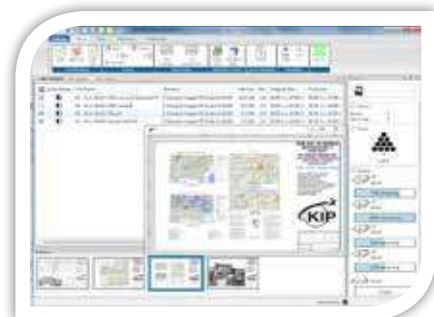
KIP Print Management Applications provide intuitive productivity for professional results across the full range of KIP Colour and B&W Systems.

## KIP PrintPro

Designed for Windows® PC's, KIP PrintPro is an intuitive system management and print submission application for the complete range of KIP Colour and B&W Systems.



Multiple Copies or Collated Sets | WYSIWYP Image Preview | Individual File Settings for Job Matrix Templates | Multi-Page Settings | Colour Adjustments and Filter Selections | Email Notification | Customise Job Build Matrix Windows | Document Folding and Stamping | HPGL Pen Preset Selection | Windows® 7/8 and Vista Compatible (32 and 64 Bit) | Customise System and Folder Presets | Manage Print Queue | KIP Secure Print



## KIP PrintPro.net

KIP PrintPro.net provides KIP Colour and B&W Systems with the most feature rich browser based print submission and system management application on the market.



Multiple Copies or Collated Sets | WYSIWYP Image Preview | Individual File Settings for Job Matrix Templates | Multi-Page Support | Colour Adjustments and Filter Selections | Email Notification | Document Folding and Stamping | HPGL Pen Preset Selection | Transfer Files from KIP Printer Mailbox | Customise System and Folder Presets | Manage Print Queue and User Settings | KIP Secure Print

## KIP GraphicPro

KIP GraphicPro is a full featured RIP for graphic and technical production printing on KIP Colour Systems that fully supports graphic and technical production printing.



Unlimited Workstation Licenses | B&W, Grayscale and Colour Printing | Job Editor for Mixed B&W and Colour Sets | Multi-Page PDF/TIF | Filter Editor for Colour Control | ICC Profile Support for CMYK and RGB Colour Management | Factory/Custom Media Profiles | Nesting Single and Multiple Images | Automatic Horizontal and Vertical Paneling | Area of Interest (Zoom to Area and Print) | B&W and Colour Editing Tools | Job Monitor



## KIP Smart Print & Scan

KIP Smart Print & Smart Scan are flexible approaches to delivering print and scan services – one that responds to mobile business needs by providing a driverless cloud solution.



Submit Print Ready Files via Email Attachments | Works with any Web Enabled KIP Printer | Print B&W or Colour Documents | Scan Full Size Documents | Choose an Area of Interest | Remote Scan Auto-Archived or Printed by KIP Printer | Optional Keywords Provide Expanded Flexibility

## KIP Accounting Center

The KIP Accounting Center consolidates control of user account data and printing rules for all copy, print and scan activities for KIP Colour and B&W Systems. All System K Print Submission Apps are integrated with KIP Accounting Center.



Username and Two Customisable Fields | Import User Data Using LDAP | Clear Fields After Each Job Submission | ASCII Import/Export | Easily Update User, Project and Department Data | Automated KIP System Update via Scripting | Password Protect any or all Data Entries | No Special Data Servers Required



## KIP Cost Center

The KIP Cost Center application retrieves extensive log files directly from KIP Systems and automatically generates production reports for user, project and department level accounting data.



Integrated with all KIP Apps and Touchscreen Systems | Track Colour and B&W Copy, Scan and Print | Easy to Understand Graphical Reports | Average Toner Coverage by Percent | Daily Print and Scan Volume for Colour and B&W | User, Project and Department Categories | Access the Details of the Last 100 Jobs | KIP Toner Costs by Colour and B&W | KIP Maintenance Costs | KIP Scanner Costs by Colour and B&W

## KIP Card Reader Systems

KIP offers customers two solutions to secure the KIP Systems using contactless card readers.



**Contactless Card System Integration:** Standard FeliCa Cards | Various Contactless Cards | User Authentication Linked to Card | Load User and System Presets | Load User Cloud and SMB Credentials | Track Usage by Card | Release User Jobs at Touchscreen | KIP Accounting Center Integration | KIP Cost Center Integration

**Common Access Card Solution:** Enables/Disables Network Access | Designed for Easy Installation | Meets Homeland Presidential Security Directive (HSPD-12) | Local and Network User Authentication Using LDAP or Active Directory | Netgard MFD In-Line Network Appliance



## KIP Printer Status / SNMP

The KIP Printer Status application is the ideal solution for providing centralised status updates and information to administrators and users over a local or Wide Area Network.



SNMP Communication to KIP Printer | PC Based Windows® 7/8 Application | Monitor Status of KIP Printers | Auto Detect KIP Printer (LAN) | Visual Notification for Machine Status | View all KIP Printers on a Single Screen | Automated Meter Read

# SYSTEM SOFTWARE K

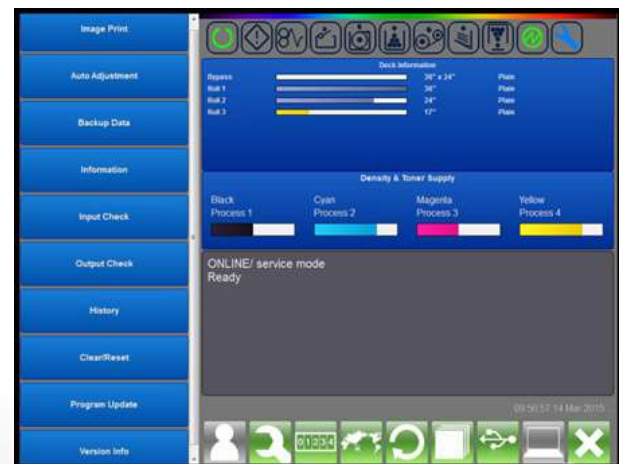
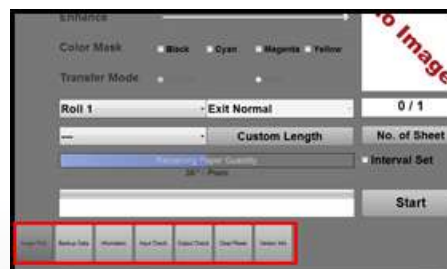
## Print Management Solutions

# KIP Touchscreen Technical Interface

The KIP Touchscreen Technical interface is a comprehensive program for the control of KIP Systems, Installation & Technical Support.

The touch intuitive and versatile interface includes mode tiling which simplifies the technical experience and management of the KIP System.

- Integrated with KIP Colour plus Black & White Systems
- Manage and Modify Printer Functions and Settings
- Review Printer Status and Operational History

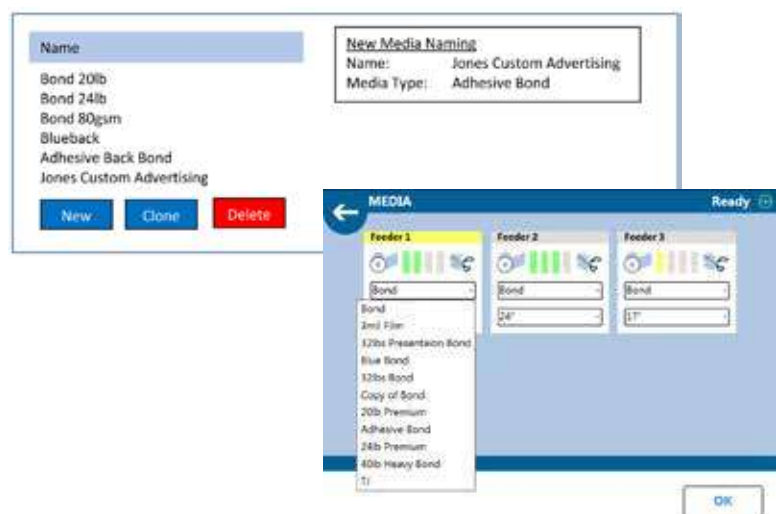


## Print Management Solutions

# KIP Custom Media Manager

The KIP Custom Media Manager is a graphic user interface that allows the operator to identify and customize names to a wide range of media types and the KIP Systems specifications.

- Integrated with KIP Colour plus Black & White Systems
- Automatically Adjust Systems Parameters
- Descriptive Media Categories





# KIP 7170

## EXCLUSIVE TECHNOLOGIES

### High Definition Print (HDP) Technology

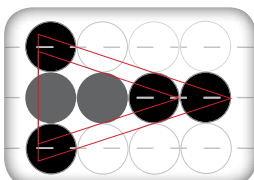
KIP HDP is a green technology that is 100% toner efficient, reducing the cost of printing and returning outstanding value and industry leading low cost of ownership. KIP Systems do not employ carriers, developers or waste receptacles that require disposal and replacement.



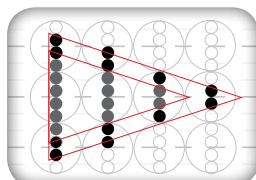
100% toner efficiency

### 600 x 2400 dpi – High Resolution

KIP Systems feature crisp, 600 x 2400 dpi printing for sharper details and extremely smooth grayscales. This higher resolution allows the system to enhance curves, diagonal lines and arcs by smoothing out line edges with excellent precision.



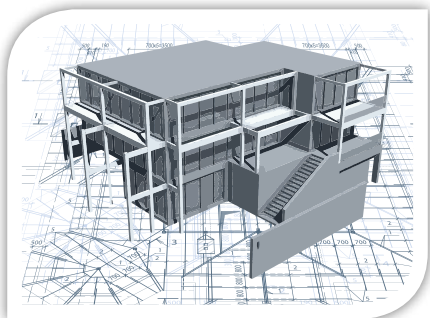
600 dpi x 600 dpi



600 dpi x 2400 dpi

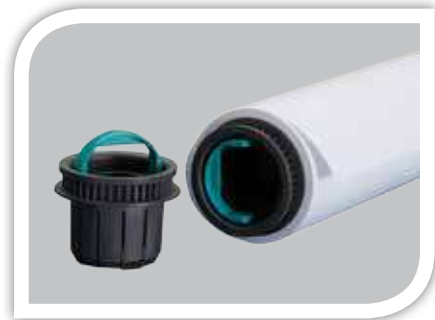
### Consistent Print Quality

KIP Systems deliver solid blacks, smooth grayscale and uniform print quality from the first to the last page of a print job. Advanced technologies including automatic environmental adjustments and contact-based developer units keep your print quality on track through seasonal climate changes.



### Media Capacity

KIP Systems feature auto-switching media drawers to ensure non-stop print production and maximum media versatility. Media status is illustrated on the touchscreen. KIP Systems feature a user friendly “End Cap” design for easy loading of media rolls.



End caps for easy changing of media rolls

### Accurate Print Sets

KIP Systems provide precise cut lengths that conform to KIP sheet size specifications. Electronic monitoring of media while printing provides an accurate page cut length. Print jobs are produced at an identical sheet size, resulting in a professional presentation.



KIP precision cutting for accurate sheet sizes

## KIP 7170

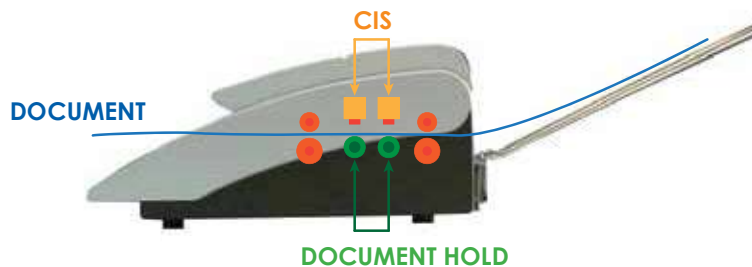
### SCANNING SYSTEM

#### KIP 7170 Integrated CIS Scanning System

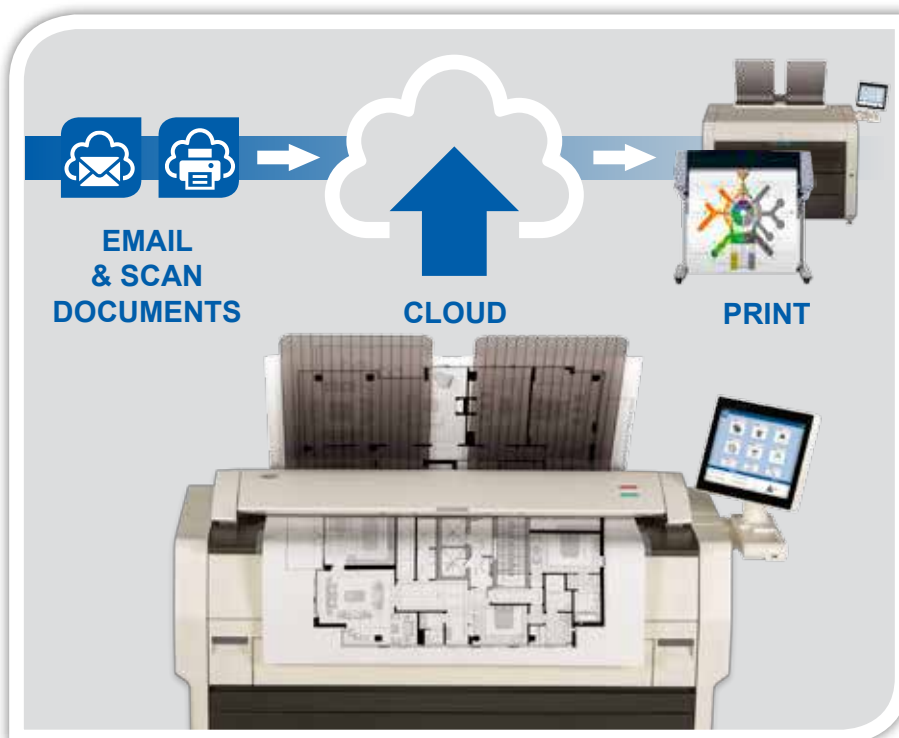
The KIP 7170 integrated large format scanner is a 24-bit, 36" / 914 mm wide full-colour image capture system perfect for processing photographs, complex maps and AEC/CAD drawings. The CIS (Contact Image Sensor) scanning technology enables high-resolution, high-speed image capture with energy saving operation from a compact design.

##### System Features:

- Create colour copies directly to inkjet printers
- Scan to a wide range of file formats
- Real-time copy and scan previews
- USB printing and scanning support
- On-screen copy, print & scan previews



The KIP 7170 integrated scanner features a support system to enhance feed reliability



Copy & scan documents to the cloud or email and create colour copies to up to 3 connected colour print systems

## KIP 7170

### SYSTEM OPTIONS



Space saving  
print & original  
stacking



KIP 1200  
high capacity  
online stacker



KIPFold 1000  
compact online  
fan folder



KIPFold 2000  
online fan &  
cross folder



PDF format  
printing keycode



Secure hard drive  
connection kit



### KIPFold 1000

The KIPFold 1000 is a compact but powerful online folder designed to easily, conveniently and quickly fan fold documents with KIP 7170 print systems.

### KIPFold 2000

The KIPFold 2000 system automates wide-format document folding requirements by providing folding, stacking and collation in a compact design. KIP online folders intelligently communicate with KIP printers and are fully integrated with KIP software applications & printer drivers to provide seamless workflow integration.

## KIP 7170

## INTEGRATED FOLDING & FINISHING

### Document Automation

KIP integrated folding and finishing systems automate wide-format document finishing by providing folding, stacking and collation in a compact design.



### The Colour of KIP is Green

KIP is committed to product designs that promote environmental health and sustainability. KIP's goal is to consistently improve and refine the technologies in products that keep our planet green. KIP considers the total product life cycle - from the manufacturing process to final device disposal in our shared ecosystems.



KIP Systems print on  
recycled paper



Reduced electrical  
consumption



Environmental Responsibility

## SMART SOLUTIONS - INFINITE POSSIBILITIES

### KIP 7170 Multi-Function Systems



KIP 7170 single footprint system with integrated front delivery print tray



KIP 7170 single footprint system with integrated front delivery print tray plus optional rear print stacking tray



KIP 7170 system with optional rear original and print stacking system

### KIP 7170 Production Systems



KIP 7170 system with optional KIP 1200 high capacity print stacker



KIP 7170 system with optional KIPFold 1000 online fan folder



KIP 7170 system with optional KIPFold 2000 online fan & cross folder

AUTHORISED RESELLER



**KONICA MINOLTA**  
Free call 1800 789 389 [konicaminolta.com.au](http://konicaminolta.com.au)



[www.kipoceania.com](http://www.kipoceania.com)

KIP is a registered trademark of the KIP Group. All other product names mentioned herein are trademarks of their respective companies. All product features and specifications are subject to change without notice. Complete product specifications are available upon request. © 2015

V10/20/15-EU