



KONICA MINOLTA

Giving Shape to Ideas

Dynamic Functionality

Unmatched Flexibility

*Optional



- Color B&W
33/33
ppm
- COPY
- PRINT
- Scan
35 ipm
- Resolution
1,200
dpi
- A4**
Legal
- Fax
- USB
Print
- SCAN TO USB
- MOBILE SUPPORT
- LINUX SUPPORT
- BIOMETRIC
AUTHENTICATION
- mopria
- KMPS
- INFO-Palette
- IC-CARD
AUTHENTICATION
- BIO-
PLASTIC
- RECYCLED
PC/PET
- RoHS
COMPLIANCE
- WEEE
COMPLIANCE
- PRODUCTION
AT ISO
CERTIFIED
FACTORIES
- SAP®
Printer Vendor
Solution
- CITRIX®

A4 Multifunctional Printer

bizhub c3351

HIGH PERFORMANCE

Speed and quality contribute to improved office performance.



33 CL PPM | **33** BW PPM

Resolution
1,200 dpi

Maximum paper capacity
1,650* sheets (80g/m²)

* When the two optional 500-sheet paper units are added.

High-speed Printing

Delivers high-speed printing at 33 PPM in both colour and black-and-white modes (A4 portrait). Fast output even when printing a large number of documents.

Reduced Warm-up And First Copy Time

The wait time for a single copy job has been significantly reduced to help speed up operations. Warm-up time (23° rated voltage): 20 sec or less

First copy time	Colour	BW
	9.1 sec max	8.1 sec max

Enhanced Colour Quality

The 1,200 dpi printing mode improves the reproducibility of even small fonts and thin lines. It also allows line thickness to be reduced, so intricate details can be accurately reproduced.



Compact Design

With its compact design (width: 555 mm; depth: 584 mm), the bizhub C3351 can fit in small spaces like the backroom of a store, beside a desk in a SOHO environment, or in the corner of a partitioned work space in a large office. In addition, using a wireless kit*¹ makes it possible to connect to an office Wi-Fi network, further expanding the range of possible places for installation.

*¹ Upgrade Kit UK-216, the Local Interface Kit EK-P05 or Local Interface Kit EK-P06

1,650 Sheets

Equipped with a 650-sheet large-capacity paper unit as standard. The use of optional paper units can increase the capacity to a total of 1,650 sheets*².

USABILITY

Simple and intuitive, offering excellent usability for all users.

Info-palette Design

The bizhub C3351 comes with the intuitive user-friendly INFO-Palette design. Its integrated user interface provides consistent user experience in any business situation across multiple devices, including PCs, tablets, and smartphones.



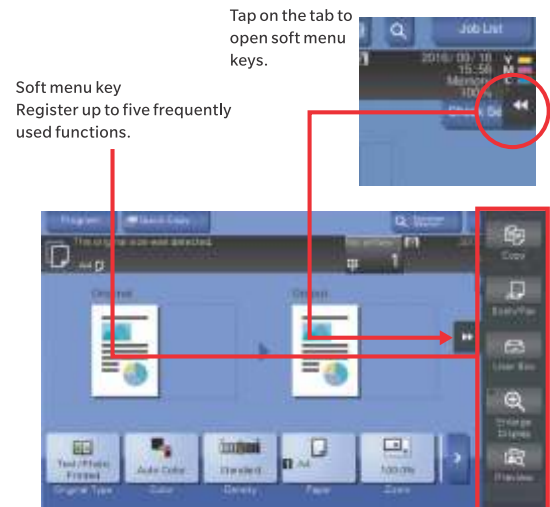
Widget Feature

Built-in widget function enables textboxes, icons, and GIF animation to be posted onto the operation panel. Use this function just like sticky notes to share such information as operating precautions, operating rules, and in-house messages.



Slide Menu

In addition to the four hard registration keys, five soft menu keys are also available for one-touch activation of functions. Assign frequently used functions (e.g. copy, fax, open numeric keypad) to these keys for improved operability.



Large 7-inch Operation Panel

The operation panel's intuitive design allows users to operate with just the swipe of a finger. It has the same user interface as bizhub A3 multifunction printers and therefore is easy to use.

The soft numeric keypad has been revised to enable faster



Connecting To Mobile Devices

Connecting to NFC-enabled Android devices

The bizhub C3351 has a mobile touch area on the operation panel with embedded NFC (Near Field Communication) technology. Pairing*¹ is available from Android devices via PageScope Mobile. Print a file by selecting it in PageScope Mobile and holding the Android device over the Mobile Touch Area. Scan*² documents to save data. If authentication is required, the user can log in by holding an Android device over the Mobile Touch Area.

*¹ Android devices must have Android OS 4.4 or higher.

*² A wireless LAN environment is required.



Connecting to iOS devices via Bluetooth LE

Users can search for and register*³ nearby bizhub units in PageScope Mobile*⁴ via Bluetooth Low Energy (LE)*⁵ technology. If user authentication is required, log in using Bluetooth LE. Easily print*³ or scan*³ via wireless LAN by selecting a bizhub unit that is registered in PageScope Mobile.

*³ A wireless LAN environment is required.

*⁴ PageScope Mobile for iPhone/iPad Version 5.0 or higher is required.

*⁵ The optional Local Kit EK-P06 is required.

NETWORK

Diverse connectivity promotes efficient workflow

Mobile Printing

AirPrint

Print from any compatible Apple iOS device on your company's wireless LAN using Air Print - Apple's standard printing system. It is compatible with iOS 4.2 and MacOS 10.7 or later.



Mopria Print Service

Wireless printing technology provided by Mopria Alliance. It allows users to print from devices installed with Android 4.4 or later.



Google Cloud Print

With the compatible software installed, you can print from any locations via the internet regardless OS or device types.



*Google Cloud Print Setup and Google account registration are required.

Konica Minolta Print Service

This application enables printing directly to bizhub via a wireless LAN from Android 4.4 or later installed devices.



PageScope Mobile for iPhone/iPad and Android

Connect Mobile devices with bizhub C3351 via wi-fi to print documents and images as well as import scanned data by using PageScope Mobile.



PageScope Mobile for Windows

Print documents on a bizhub unit from mobile device equipped with window 10 Mobile.

Bizhub Remote Access

Install bizhub Remote Access*1 to operate remotely from a mobile device as if using the bizhub unit's operation panel. It enables various 'settings' (e.g. configure sleep mode settings, register abbreviated addresses, manage document files stored in boxes, and configure MFP settings) from a remote location in the office.

*1 Download Android version from Google Play, and iOS version from the App Store (free of charge).

* MFP operation panel cannot be used when bizhub Remote Access is in use.

* The device used for remote operation must be connected to the same network as MFP.



Wireless Lan

Wireless LAN Upgrade Kit*1 enables bizhub C3351 as an Access Point, which allows external mobile devices to get a secure connection without the need for an internal LAN. For greater convenience, pair mobile device using page scope mobile with bizhub C3351 to read QR code displayed on the operation panel.

*1 Optional Upgrade Kit UK-216 and Local Connection Kit EK-P05 or EK-P06 are required.

QR code display screen



Wireless LAN/Simple AP mode bizhub C3851FS series



* In simple AP (access point) mode, up to four devices can be connected simultaneously.

Web Browser

Print PDF files or maps viewed on websites.



SECURITY

High-level security to address risks in multiple ways

Various Authentication Capabilities

A built-in authentication system can be found on the operation panel, allowing the administrator to set restrictions on copying, scanning, faxing*1, printing, using external memory, and using box functions for each user and department. It also supports user authentication*2 with contactless IC cards,*3 biometric authentication*2 using the user's finger vein patterns, and authentication on NFC-enabled Android devices*4.

*1 Optional Fax Kit FK-517 required.

*2 Device Connection I/F Kit EK-P05 or EK-P06 required in addition to optional IC Card Authentication Unit AU-201S and Mounting Kit MK-P02.

*3 Supports contactless IC cards include FeliCa (Idm), SSFC, FCF, FCF (campus), and MIFARE (UID).

*4 Android device that runs Android OS 4.4 or higher and supports Host Card Emulation (HCE), and PageScope Mobile for Android Version 4.1 or higher are required.



Secure Printing

When printing, set up a password on the printer driver screen to store print data in the bizhub unit's hard disk. It will not print unless authenticated by entering the same password on the operation panel. A useful function for printing confidential documents or for restricting receivers of the document.



Fax Security

Equipped with security functions, the bizhub C3351 helps prevent incorrect fax number input or selection of wrong recipient.

Recipient's number displayed for confirmation

Press the start button on the fax to display the recipient's name on the operation panel. Confirm that the correct fax recipient is selected.

Enter recipient's number twice

When entering the fax number directly, the user is required to enter the recipient fax number twice before transmission.

Third-party authentication function

A fax is sent only after someone other than the sender confirms the destination and enters the transmission authorisation password.

Trusted Platform Module

Trusted Platform Module (TPM): a security chip that encrypts/decrypts data for secure management of sensitive information (e.g. MFP digital certificates and passwords). The TPM key for encrypting sensitive information is saved in a dedicated storage area in the TPM chip. The information is secure, as the storage area cannot be accessed externally.

* The optional i-Option LK-115v2 is required.

ISO/IEC 15408 Certification

bizhub C3351 is to be certified as being compliant with the international security standard ISO/IEC 15408 as it has met the rigorous security requirements of US Government Approved Protection Profiles.

ECOLOGY

An energy-efficient, resource-saving design

Improved Light Resistance

Newly developed toners with improved light resistance produce documents with improved print quality suitable for long-term storage.



Original image

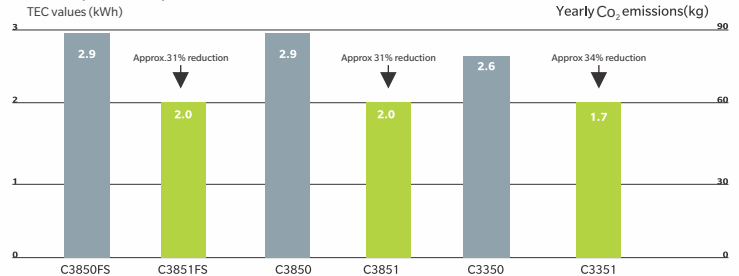
Light-resistant toner

Conventional toner

TEC Values

With its energy-efficient design, the bizhub C3351 easily exceeds the standard energy consumption (TEC) values defined in International Energy Star Program Version 2.0. Compared with previous models, its TEC value and CO₂ emissions have decreased substantially by approximately 31%-34%.

TEC comparison with previous models



* Values for 220-230 v

* TEC values applied to the international Energy Star Program Version 2.0 | Annual CO₂ emission = TEC value x 52 week x emission Factor (from the November, 2011 press release by Japan's Ministry of the Environment)

Power Consumption

We have improved bizhub units' power-saving logic (e.g. turning off MFP's CPU during sleep mode) and successfully cut power usage during sleep mode to 0.5 W, contributing to reducing the environmental impact and the total cost of ownership (TCO).

Global Environmental Standards

We address global environmental issues by ensuring our products' compliance with the requirements of the International Energy Star Program, which aims to develop and introduce energy-efficient office appliances. Our products also comply with the environmental standards adopted by countries with high environmental awareness. We are committed to work from a broad range of perspectives to reduce our environmental impact.



System Overview

System memory	2 GB (standard), 4GB (optional)
System hard disk	250 GB
Interface	10-BASE-T/100-BASE-TX/1,000-BASE-T Ethernet, USB 1.1, USB 2.0,
Network protocols	TCP/IP (IPv4/IPv6), FTP, SMB, SMTP, WebDAV, TCP Socket WSD
Frame types	Ethernet 802.2, Ethernet 802.3, Ethernet II, Ethernet SNAP
Automatic document feeder	Up to 50 originals (80 gsm), Max. A4 or legal 50-128 gsm
Printable paper size	A6-A4, B6, B5, Letter, Legal, customised paper sizes
Printable paper weight	60-210 gsm
Paper input capacity	Standard: 650 sheets, Max.: 1,650 sheets
Tray 1	550 sheets, A6-A4, 60-210 gsm
Tray 2 & 3 PF-P13 (optional)	2 x 500 sheets, B5, A4, Executive, Letter, Legal, 60-90 gsm
Bypass tray	100 sheets, A5-A4, custom sizes, 60-210 gsm
Automatic duplexing	A4/Letter, 60-210 gsm
Finishing modes ¹	Group, sort, offset-sort, offset-group
Output capacity	Max.: 250 sheets
Power consumption	[220-240 V, 50/60 Hz] less than 1.7 kW (system)
System dimensions ²	[W x D x H] 555 x 584 x 603 mm
System weight ³	Approx. 49.2 kg

² Excluding ADF and lower paper feed unit.³ Including Drum and Developer, excluding Toner bottle.**Copier Specifications**

Copying process	Electrostatic laser copy, tandem, intermediate transfer
Toner system	Simitri® HD Polymerized Toner
Copy/print speed A4 (mono/colour)	Up to 33 ppm
1st copy out time (mono)	8.1 sec.
1st copy out time (colour)	9.1 sec.
Warm-up time ⁴	Approx. 20 sec.
Copy resolution	600 x 600 dpi
Gradation	256 gradations
Multicopy	1-999 sheets
Original format	A6-A4
Magnification	25-400% in 0.1% steps, auto-zooming

⁴ Warm-up time may vary depending on the operating environment and usage**Printer Specifications**

Print resolution	1,200 x 1,200 dpi, 600 x 600 dpi
Page description language	PCL 5e/c Emulation, PCL XL (Version 3.0) Emulation, PostScript 3 (3016) Emulation, XPS Ver.1.0, PPML/GA2.2, PPML VDX, Open XPS, PDF 1.7, OOXML (docx, xlsx, pptx)
Operating systems	Windows Vista (32/64), Windows 7 (32/64), Windows 8.1 (32/64), Windows 10 (32/64), Windows Server 2008 (32/64), Windows Server 2008 R2, Windows Server 2012, Windows Server 2012 R2, Macintosh OS X 10.6 or later, Red Hat Enterprise Linux 5 or later
Printer fonts	80 PCL, 137 PostScript 3 Emulation
Mobile printing	AirPrint (iOS), Mopria (Android), Google Cloud Print (optional), Wi-Fi Direct (optional), Konica Minolta Print Service (Android), PageScope Mobile (iOS, Android, Windows 10 Mobile)

A4 multifunctional with 33 ppm b/w and colour. Standard Emperon™ print controller with PCL 5e/c, PostScript 3, PDF 1.7, XPS, OpenXPS and OOXML support. Paper capacity of 550 + 2 x 500 sheets and 100-sheet bypass tray. Media from A6 to A4 and 60 – 210 gsm. 2 GB memory, 250 GB hard disk and Ethernet standard.

Scanner Specifications

Scan speed (mono)	Up to 35 ipm (A4)
Scan speed (colour)	Up to 35 ipm (A4)
Resolution	Max.: 600 x 600 dpi
Scan modes	Scan to Email, Scan to PC (SMB), Scan to FTP, Scan to WebDAV, Scan to BOX (HDD), Scan to USB memory, Scan to DPWS (Device Profile for Web Service), Network TWAIN scan
File formats	JPEG, TIFF, PDF, XPS, , PDF/A-1a (optional), PDF/A 1-b (optional), compact PDF

Fax Specifications (optional)

Fax	Super G3
Transmission	Analog fax, Internet fax, Colour Internet fax, IP address fax
Resolution	Max.: 600 x 600 dpi (ultra-fine)
Compression method	MH, MR, MMR, JBIG
Modem speed	Up to 33.6 Kbps

Components and Options

DK-P03 Copier desk	Provides storage space for print media and other materials
FS-P03 Off-line stapler	20-sheet stapling
SK-602 Staple kit	1 cartridge, 5,000 needles (for C3851FS only)
SK-501 Staple kit (off-line)	1 cartridge, 1,000 needles (FS-P03 is required)
EK-P05 Local interface kit	Local interface kit for USB hub
EK-P06 Local interface kit	Local interface kit for USB hub with Bluetooth LE
UK-216 Wireless LAN kit	Wireless LAN and wireless LAN Access Point Mode
AU-102 Biometric authentication	Finger vein scanner
AU-201S IC card authentication	IC card authentication unit
MK-P02 Mount kit	Installation kit for IC card authentication
WT-P02 Working table	Authentication device placement
FK-517 Fax kit	Super G3 fax, fax functionality, single line
KP-101 10-Key pad	For use instead of touchscreen
KP-H01 Keyboard holder	Keyboard holder
UK-211 Upgrade kit	2 GB memory extension for upgrades
LK-102 v3 PDF enhancements	PDF/A, PDF encryption, digital signature
LK-104 v3 Voice guidance	Provides voice guidance functions
LK-105 v4 OCR text recognition	Searchable PDF and PPTX, PDF/A-1a
LK-106 Barcode fonts	Supports native barcode printing
LK-107 Unicode fonts	Supports native Unicode printing
LK-108 OCR A and B fonts	Supports native OCR A and B font printing
LK-110 v2 Document converter pack	Generates various file formats incl. DOCX, XLSX and PDF/A
LK-111 ThinPrint® Client	Print data compression for reduced network impact
LK-115 v2 TPM activation	Trusted Platform Module for protection of data encryption and decryption
ID card reader	Various ID card technologies

- All specifications refer to A4-size paper of 80 gsm quality.

- The support and availability of the listed specifications and functionalities vary depending on operating systems, applications and network protocols as well as network and system

- Some of the product illustrations contain optional accessories.

- Specifications and accessories are based on the information available at the time of printing and are subject to change without notice.

- Konica Minolta does not warrant that any specifications mentioned will be error-free.

- All brand and product names may be registered trademarks or trademarks of their respective holders and are hereby acknowledged.

For more information please visit the bizhub Web site at

<http://bt.konicaminolta.in/bizhub-c3351-product-overview/>

KONICA MINOLTA, the KONICA MINOLTA logo and symbol mark, "Giving Shape to Ideas", bizhub, bizhub PRO, bizhub PRESS, magicolor, PagePro, PageScope, Simitri, Simitri HD, Simitri HD+, Simitri with Biomass, Emperon, S.E.A.D., S.E.A.D.II, Printgroove and Konica Minolta Optimised Print Services and their respective logos are registered trademarks or trademarks of KONICA MINOLTA, INC. Evernote is a registered trademark or trademark of Evernote Corporation. SharePoint is a registered trademark or trademark of Microsoft Corporation in the U.S. and other countries. All other brands and product names are registered trademarks or trademarks of their respective companies or organisations.

Ecology & Environment

KONICA MINOLTA products are designed with the environment in mind.

- Energy Star
- RoHS Compliance
- WEEE Compliance
- Eco-friendly Toners



REQUIREMENTS FOR SAFE USE

- Please read and follow the instruction manual to ensure safe operation.
- Only operate using appropriate power supply and voltage.
- Connecting the earth wire to an inappropriate place may cause explosion or electric shock. Please connect accordingly.

For more information: SMS "KM A4" send to 52424 or Call: 1-800-266-2525

Konica Minolta Business Solutions India Pvt. Ltd. : 10th Floor, Building No.8, Tower C, DLF Cyber City, Phase II Gurgaon, Haryana - 122002, India. Board No. +91-124 6652000.

URL: www.konicaminolta.in, marcom@bin.konicaminolta.in | Konica Minolta Inc., Tokyo, Japan.

Connect with us : 

Contact Point:

