



KONICA MINOLTA

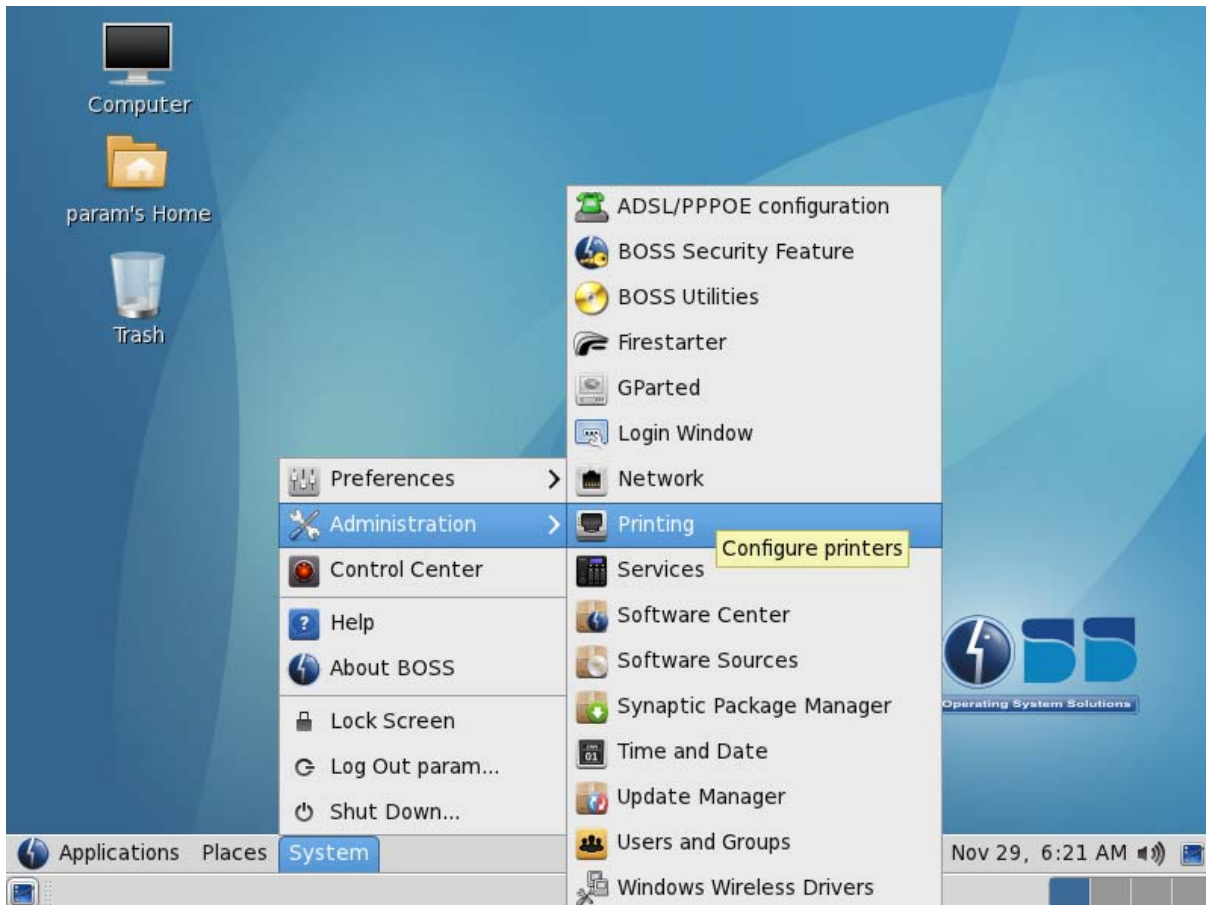
.....Technical Notice & Information.....

Issued by : BIN_Service
Issued on : 2013/11/08
No. :

Product Model : PagePro 1590MF/PagePro 1500W
Category : Print Quality Hardware **Software** Network Others
Classification : Trouble shooting **Instruction** Reference Others
Information for : **Technical Support** On-Site Repair Workshop Repair Others

Subject: Configure PagePro 1590MF/PagePro 1500W series on Linux

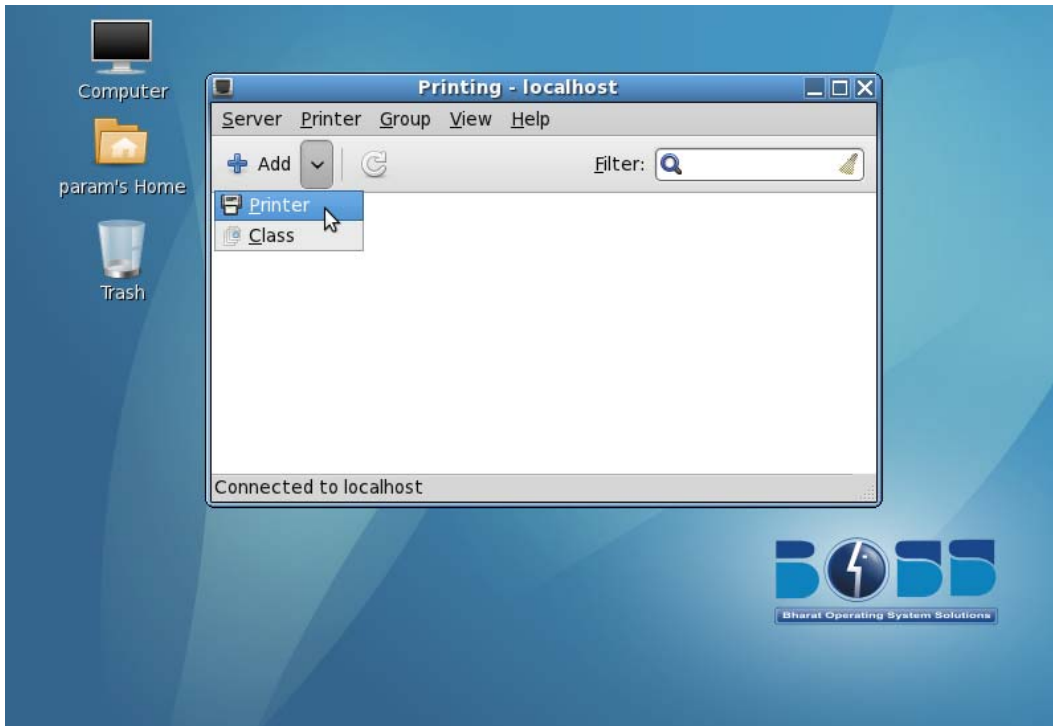
1. Download the driver and extract the downloaded rpm file to any location in your system
2. In Desktop click on the “System” menu on the Taskbar, and expand the “Administration” menu item, after that click on the “Printing” sub-menu item as shown below.





KONICA MINOLTA

3. Next select the Add Printer menu item



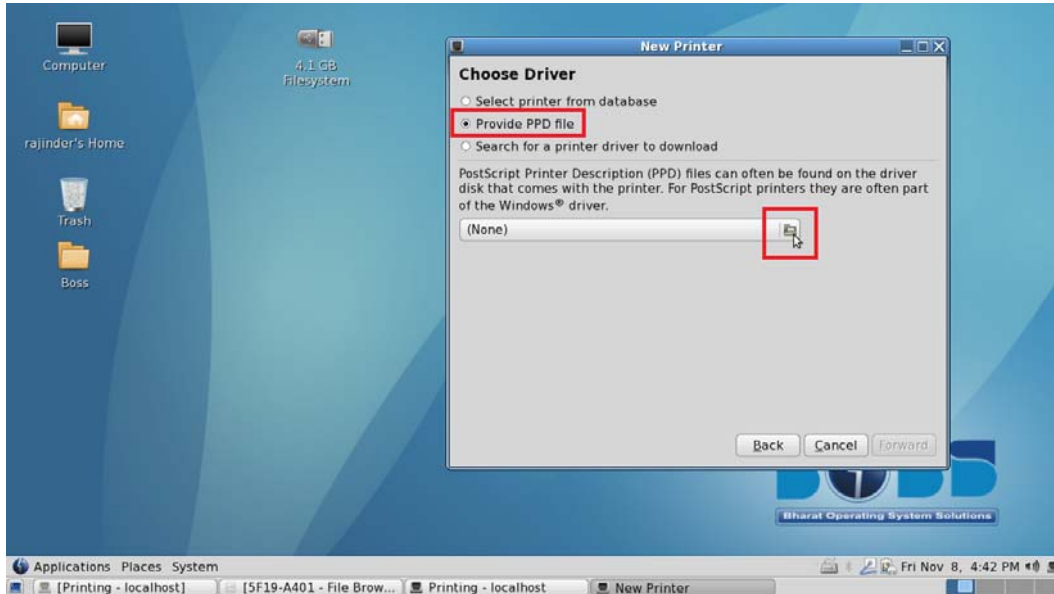
4. Click on the "Network Printer" item in the left pane to expand it, select the "LPD/LPR Host or Printer" item and then fill in the IP Address of the MFP for the "Host" item & type "print" as Queue name.



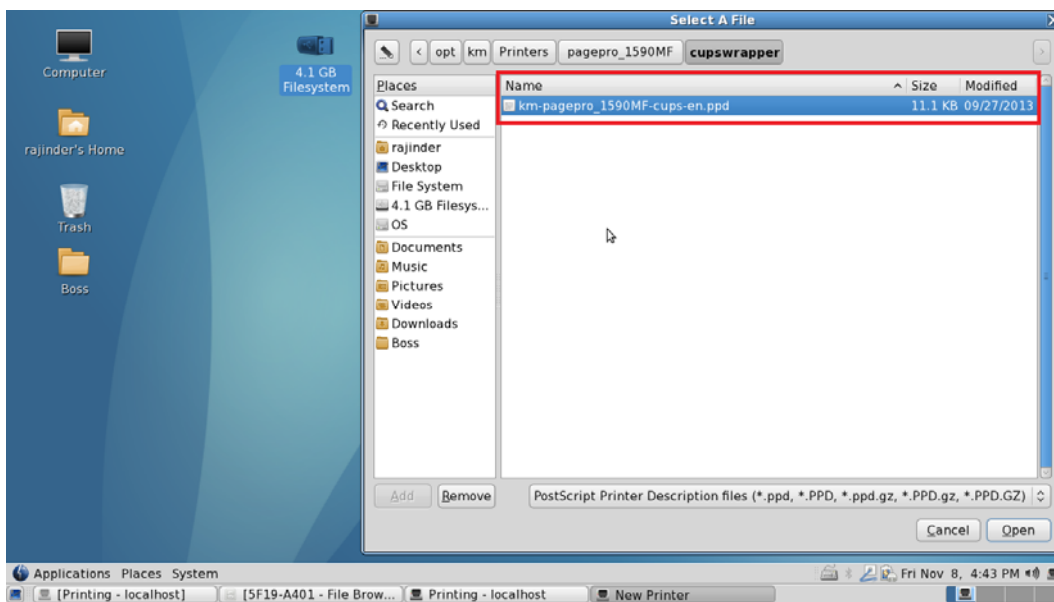


KONICA MINOLTA

5. Click on the Provide PPD file and select the browse icon.



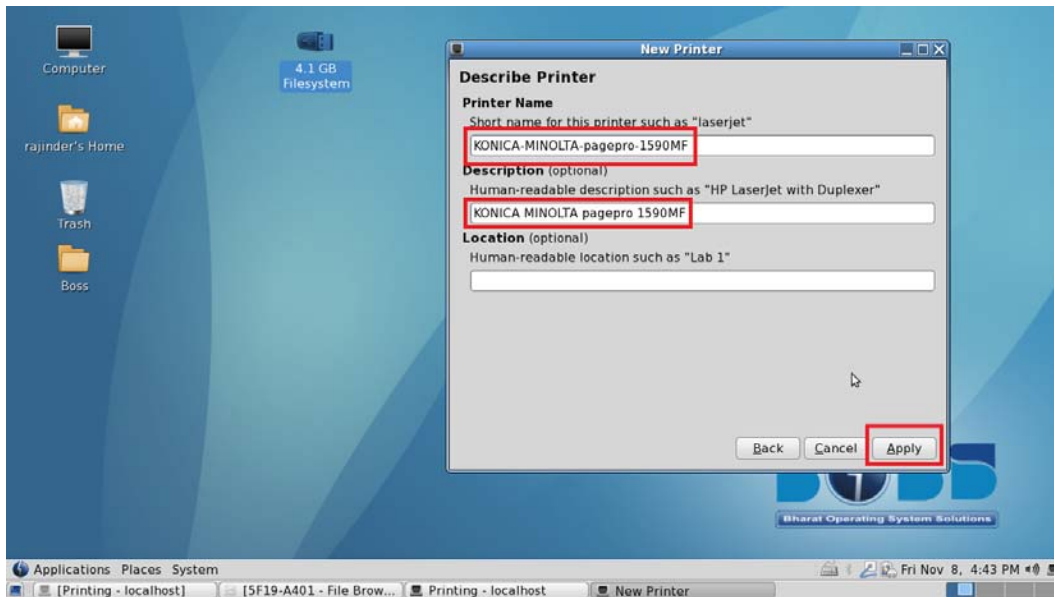
6. Browse the extracted PPD file and click on forward icon



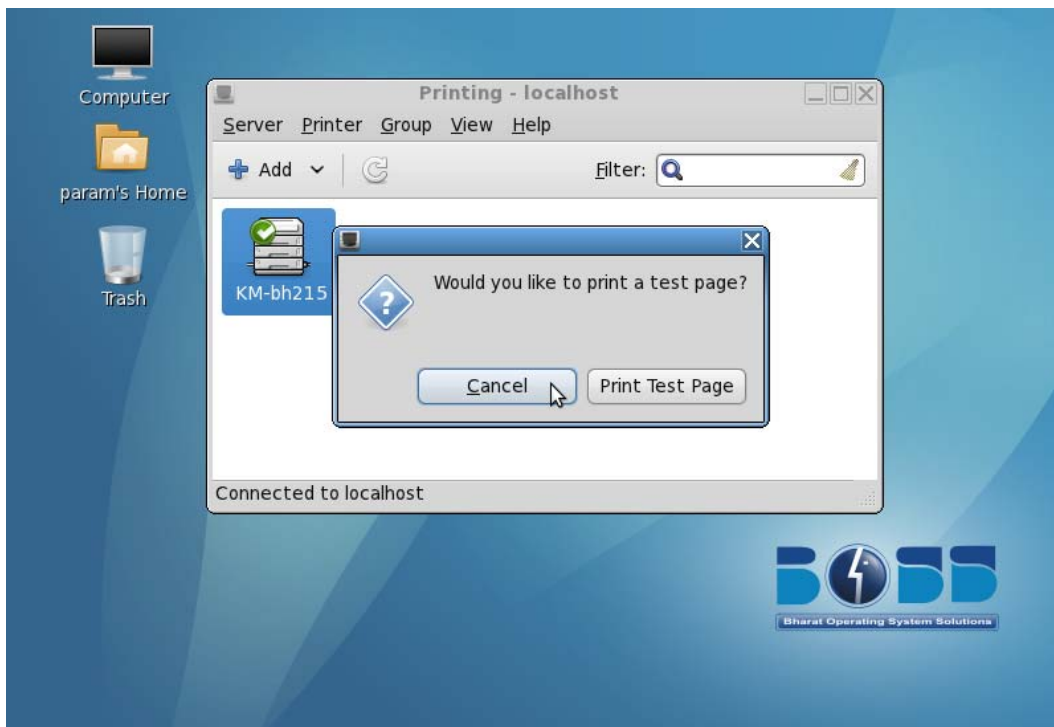


KONICA MINOLTA

7. Fill in a name & description indicative of the model being configured.



8. The printer would be created & when prompted to print a Test Page cancel.



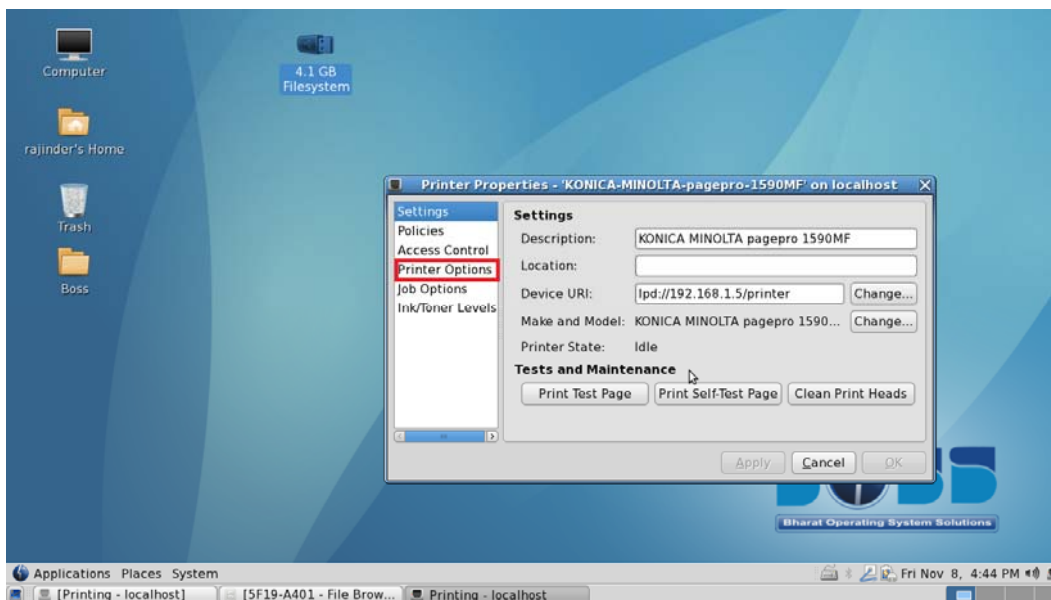


KONICA MINOLTA

9. Right click on the printer & choose the “Properties” menu.



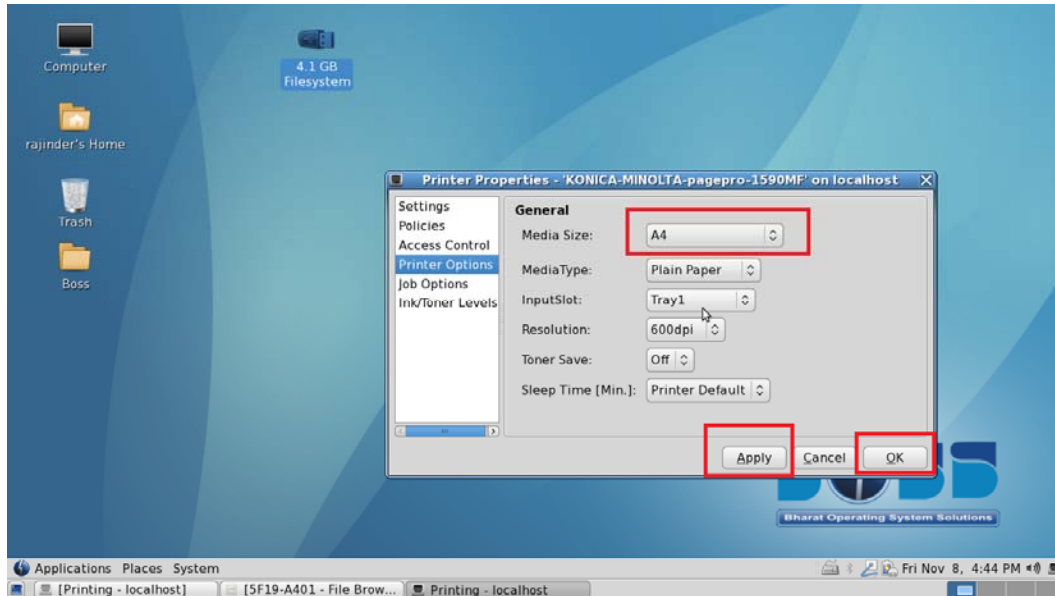
10. On the properties dialog click on the “Printer Options” item in the left pane.





KONICA MINOLTA

11. Ensure that the “Media Size” selected is A4 & change if required.



12. Now return to the “Settings” item & Print Test Page to check & complete the configuration.

- END -